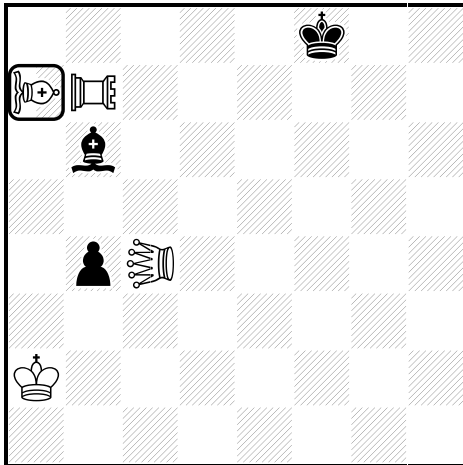


Alex LEVIT
Julia's Fairies 2012



hs≠3* (4+3) C+

Roi KoBul blanc

Roi KoBul noir

♞ = Fou-Locuste

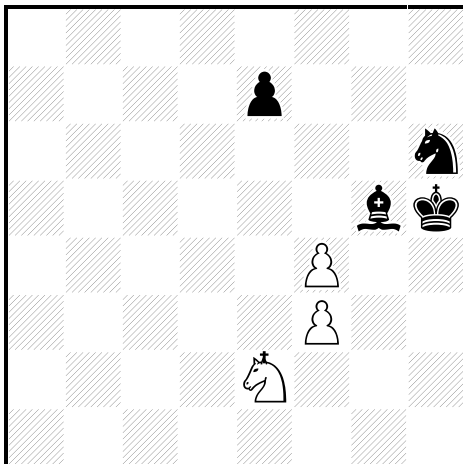
♘ = Lion

♖ = Tour-Locuste

1...Rg8 2.TL×b6-b5 FR×c4+ 3.TL×b4-b3+ R×b3‡
 1.LIa4 Re8 2.FL×b6-c5 FR×a4 3.FL×b4-a3+ R×a3‡

Echecs croisés
 Anti-batterie
 Sacrifice blanc

Julia VYSOTSKA
Julia's Fairies 2012



h≠2.5* (3+4) C+

Roi KoBul blanc

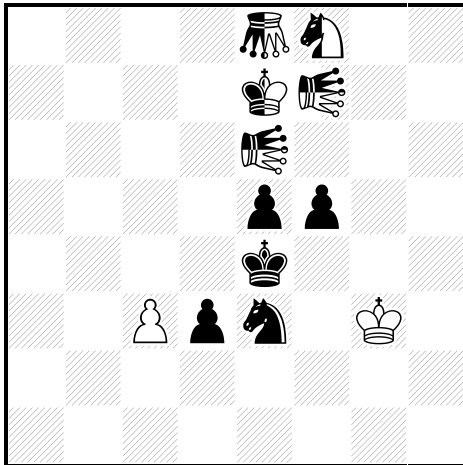
Roi KoBul noir

♙ = Pièce Royale

1.Cf7 f5 2.Ff4 CR×f4‡
 1...CRd4 2.Cg4 CRf5 3.Ff6 f×g4‡

Auto-blocage
 Sacrifice noir

Julia VYSOTSKA
Julia's Fairies 2012



h#2* (2+5+4) C+

♞=Sauterelle

♟=Locuste

1...Cn×e6 2.Cnc7 LOn×c7-b7‡

1.Cng6 Cn×e7 2.Cn7d5 LOn×d5-c4‡

Zilahi

Echec double

Batterie masquée

Batterie blanche

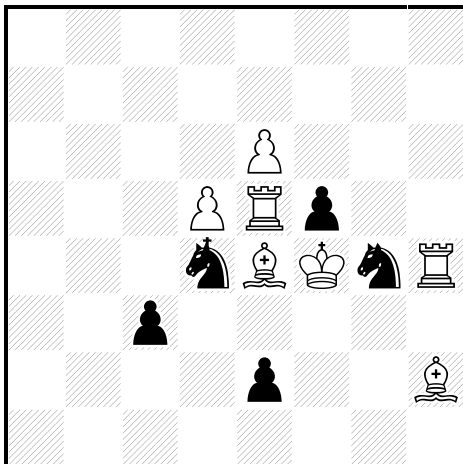
Sacrifice noir

Captures réciproques

Auto-clouage indirect

Déclouage indirect

Petko A. PETKOV
Julia's Fairies 2012



h#2 (7+5) C+

2.1.1.1

Roi KoBul blanc

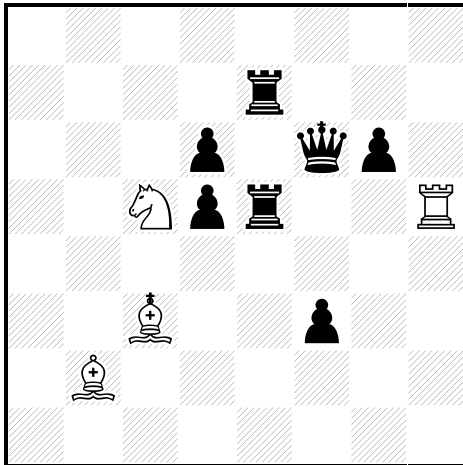
Roi KoBul noir

♞=Piçce Royale

1.Ce3 T×f5 2.R×e4+ FR×e3‡

1.Cf2 F×f5 2.R×e5+ TR×f2‡

Petko A. PETKOV
Julia's Fairies 2012



h≠2* (4+7) C+

Roi KoBul blanc

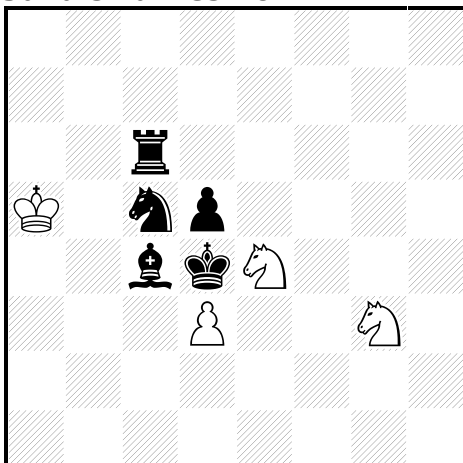
Roi KoBul noir

* =Pièce Royale

1...Tg5 2.T×g5+ TR×f3‡
 1.Tf7 Ce6 2.T×e6+ CR×d5‡

- Mouvement Pelle
- Echecs croisés
- Auto-blocage
- Echec double
- Batterie masquée
- Batterie royale
- Batterie noire
- Batterie blanche
- Quasi-sacrifice blanc
- Auto-déclouage direct

Julia VYSOTSKA
Julia's Fairies 2012



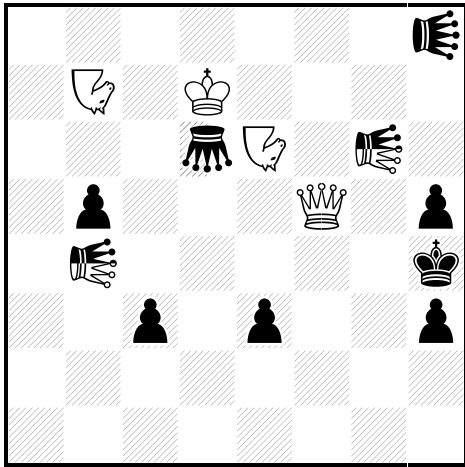
h≠2 (4+5) C+

2.1.1.1

1.C×e4 Cf5+ 2.Rc5 d4‡
 1.F×d3 Ce2+ 2.Rc4 Cd2‡

Zilahi
 Mats modčles
 Capture d'une pičce blanche gźnante

Petko A. PETKOV
Julia's Fairies 2012



hs±3 (4+8+2) C+

2.1.1...

♞=Sauterelle

♟♞=Locuste

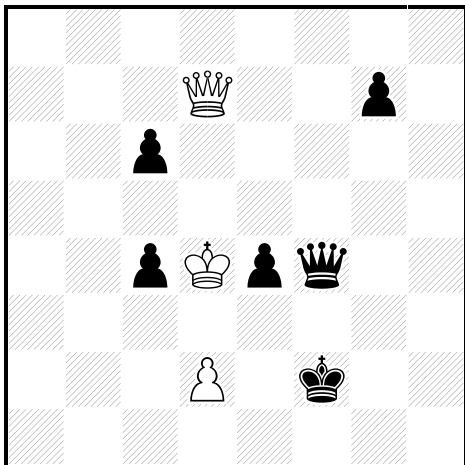
♝=Noctambule

1.Ned8 Sa3 2.Nh6 Sd3 3.Dc5+ LOn×c5-d6‡

1.Nc2 Sh6 2.Na3 Sd2 3.De6+ LOn×e6-d6‡

Echecs croisés
 Echo diagonal-orthogonal
 Echec double
 Batterie masquée
 Anti-batterie
 Batterie blanche
 Sacrifice blanc
 Auto-clouage direct

Mikhajl CROITOR
Julia's Fairies 2012



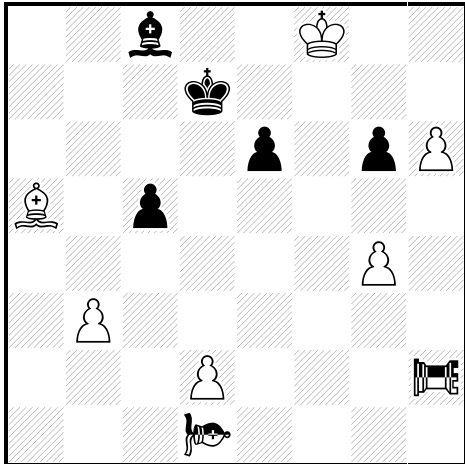
hs±4.5 (3+6) C+

Circé

1...De5+ 2.R×e5(Dd8) c5 3.d4 Re3 4.Rd6 R×d4(d2) 5.Re6+ D×d7(Dd1)‡

Anderssen
Batterie royale
Batterie blanche
Sacrifice noir

Julia VYSOTSKA
Julia's Fairies 2012



h#2 (6+5+2) C+

b) ♜c5→d6

♞ = Fou-Locuste

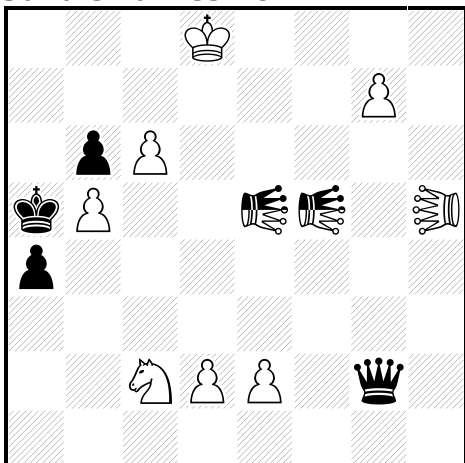
♝ = Tour-Locuste

a) 1.TL×d2-c2 TL×c5-c6 2.FL×b3-a4 TL×e6-f6‡

b) 1.FL×g4-h5 FL×g6-f7 2.TL×h6-h7 FL×e6-d5‡

Demi-clouage noir
Echo diagonal-orthogonal
Batteries réciproques
Batterie blanche
Auto-clouage indirect
Déclouage indirect

Petko A. PETKOV
Julia's Fairies 2012



sh#3 (8+4+2) C+

2.1.1.1

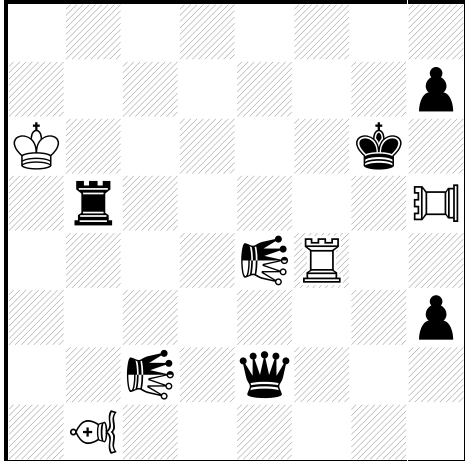
♞ = Kangourou

 = Locuste

1.D×g7 2.Dg1 3.Dc1 LOn×f5-g5‡
1.D×c6 2.Dh1 3.Dd1 LOn×e5-d5‡


Zilahi
Anti-batterie
Captures réciproques
Déclouage indirect


Petko A. PETKOV
Julia's Fairies 2012



h#2 (4+5+2) C+

2.1.1.1

 = Fou-Lion

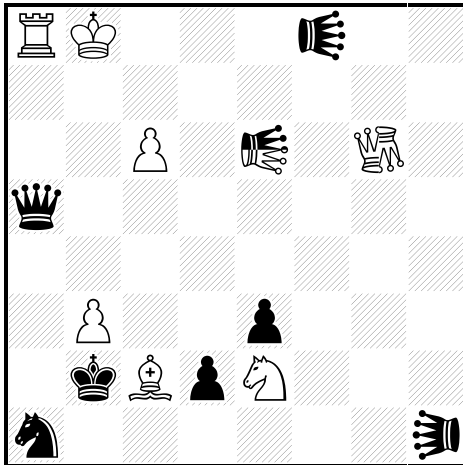
 = Tour-Lion

 = Locuste

1.Df2 TLh1 2.Td5 LOn×f2-g2‡
1.Df3 TLh2 2.Tb2 LOn×f3-g2‡

Changement de pièce clouante
Echec double
Batterie blanche
Déclouages réciproques
Pseudo-sacrifice noir
Mat par clouage
Déclouage indirect

Dmitry TUREVSKY
Julia's Fairies 2012



h≠2 (7+7+1) C+

2.1.1.1

♘=Léo

♙♚=Locuste

♛=Double-Sauterelle

1.LEh7 Rb7 2.De5 LOn×e5-e4‡

1.Da2 Rc7 2.LEd5 LOn×d5-c4‡

Echo diagonal-orthogonal

Batterie blanche

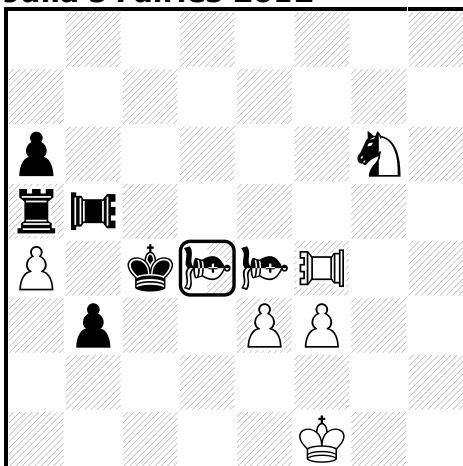
Déclouages réciproques

Sacrifice noir

Auto-déclouage indirect

Déclouage indirect

Petko A. PETKOV
Julia's Fairies 2012



h≠3* (5+5+3) C+

♖=Tour-Locuste

♗=Tour-Lion

♘=Fou-Locuste

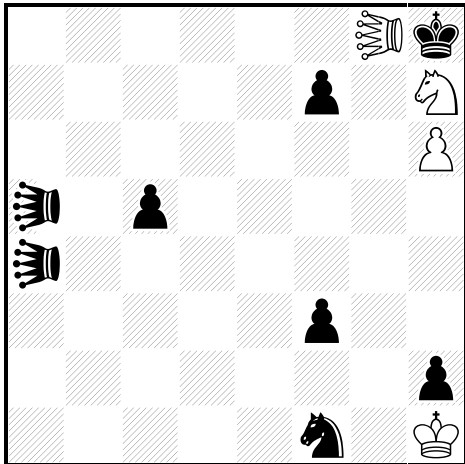
1...Cne5+ 2.TL×e5-f5 Rf2 3.Td5 FLn×f5-g6‡

1.Cne7 Cnd5 2.TL×d5-e5 Rg2 3.Tc5 FLn×e5-f6‡

Auto-blocage

Batterie blanche
 Déclouages réciproques
 Sacrifice blanc
 Quasi-sacrifice noir
 Auto-clouage indirect
 Déclouage indirect

K. SEETHARAMAN
Julia's Fairies 2012



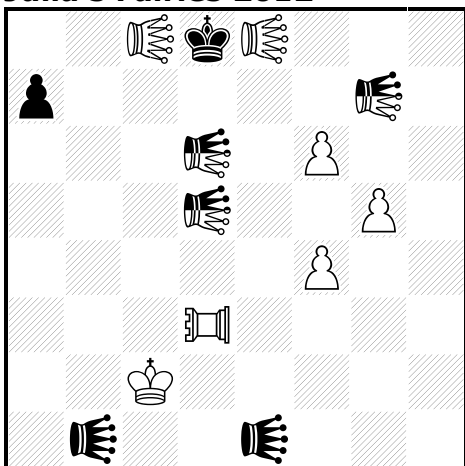
hs±2.5 (4+8) C+

b) ♔g8→g7
 ♔♚=Léo

- a) 1...LEa2 2.LEa8 LE5a3 3.Cf8+ LE×a8‡
 b) 1...LEa7 2.LEa1 LE4a6 3.Cf6+ LE×a1‡

Echecs croisés
 Anti-batterie
 Pseudo-sacrifice blanc

Juraj LORINC
Julia's Fairies 2012



s±2 (7+4+3) C+

♚♛♜♝=Locuste
 ♞=Pao

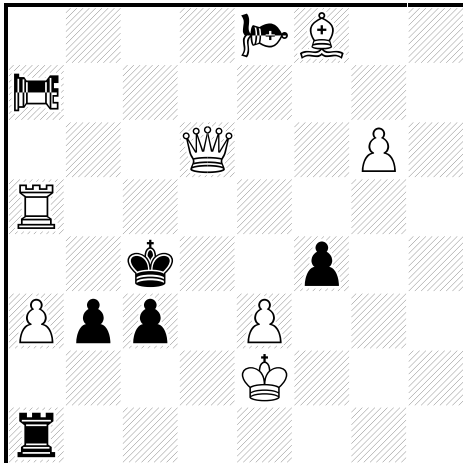
- 1...LOn×f6-e5 2.LOn×d6-d7+ LOn×d3-d2‡
 1.f7? [2.LOn×d6-d7+ A LOn×d3-d2‡]

1...LOn×g5-g4 a 2.LOn×d5-d4+ B LOn×d3-d2‡
 mais 1...LOn×f7-e7!

1.f5! [2.LOn×d5-d4+ B LOn×d3-d2‡]
 1...LOn×g5-g4 a 2.LOn×d6-d7+ A LOn×d3-d2‡
 1...LOn×f6-e5 2.LOn×e5-f4+ LOn×d3-d2‡

Zilahi
 Echec double
 Anti-batterie
 Batterie noire
 Batterie blanche
 Déclouages réciproques
 Captures réciproques
 Déclouage indirect
 Le Grand
 Mats (suites) changé(e)s

Julia VYSOTSKA
Julia's Fairies 2012



hs‡3 (7+5+2) C+

2.1.1...

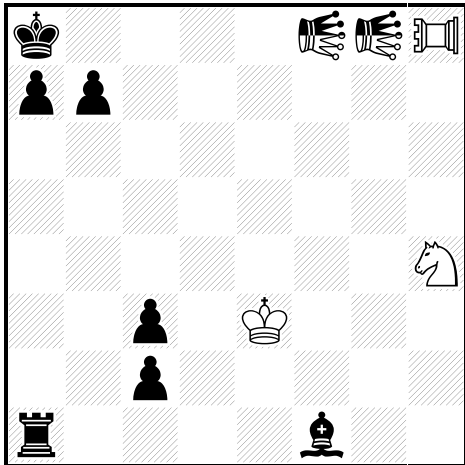
♞ = Fou-Locuste

♜ = Tour-Locuste

1.Fe7 TLn×e7-f7 2.TLn×f4-f3 FLn×g6-h5 3.Df4+ TLn×f4-f5‡
 1.Tb5 FLn×b5-a4 2.FLn×b3-c2 TLn×a3-a2 3.Dd3+ FLn×d3-e4‡

Clouages réciproques
 Echecs croisés
 Echo diagonal-orthogonal
 Batteries réciproques
 Batterie noire
 Sacrifice blanc
 Clouage direct
 Déclouage indirect

Julia VYSOTSKA
Julia's Fairies 2012

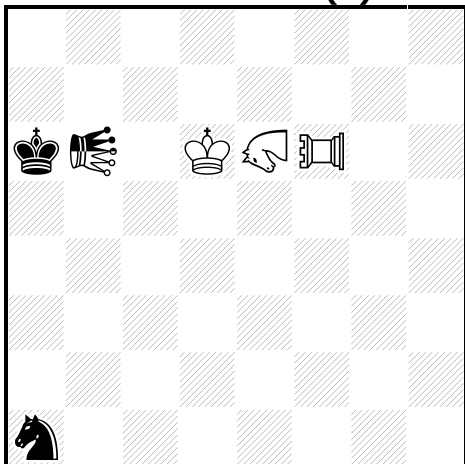


hs≠3* (3+7+2) C+
 ♖=Tour-Lion
 ♚=Locuste

1...Ta6 2.Cg2 Tf6 3.LOn×f6-f5+ LOn×g2-g1‡
 1.Cf5 Ta5 2.Cd6 Tg5 3.LOn×g5-g4+ LOn×d6-c5‡

Echecs croisés
 Guidelli
 Batterie blanche
 Déclouages réciproques
 Sacrifice blanc
 Sacrifice noir
 Mats miroir
 Déclouage indirect

Jiřnos MIKITOVICS
Julia's Fairies 2012 (v)



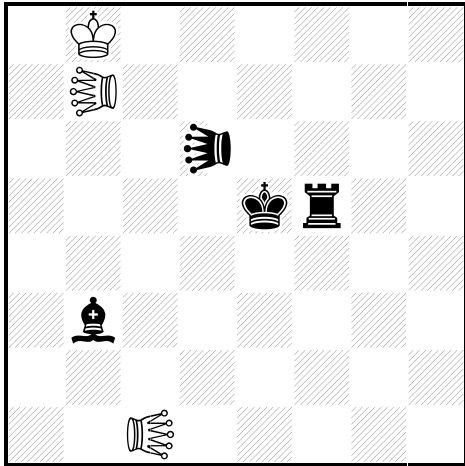
h≠2* (3+2+1) C+
 ♚=Girafe
 ♖=Tour-Lion
 ♚=Locuste

1...Re5 2.Cb3 LOn×b3-b2‡
 1.Cc2 Rd5 2.Cb4+ LOn×b4-b3‡

Demi-batterie blanche

Demi-batterie royale
 Batterie blanche
 Déclouages réciproques
 Sacrifice noir
 Auto-clouage indirect
 Auto-déclouage indirect
 Clouage indirect
 Déclouage indirect

Alex LEVIT
Julia's Fairies 2012



hs±3.5 (3+4) C+

2.1.1...

Roi KoBul blanc

Roi KoBul noir

♔♚=Lion

♖=Locuste

1...Tg5 2.LO×g5-h6 TRe4 3.LO×d6-c6+ Fd5 4.Ra8 LIR×c6‡

1...Fc4 2.LO×c4-c5 FRg7 3.LO×d6-e7+ Tf7 4.Ra7 LIR×e7‡

Echo diagonal-orthogonal

Echec double

Anti-batterie

Sacrifice blanc

Sacrifice noir

Auto-clouage direct

Auto-déclouage indirect