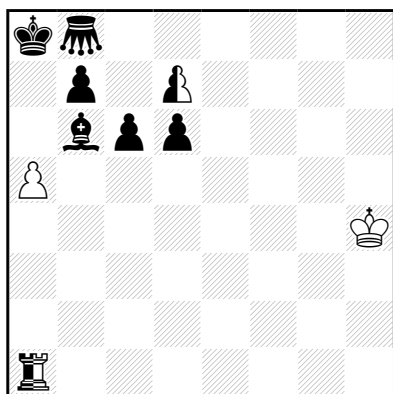


## Examples to the Christmas Blitz-Tourney by Julia's Fairies

### Give mate with a neutral piece!

No.1. Scheme

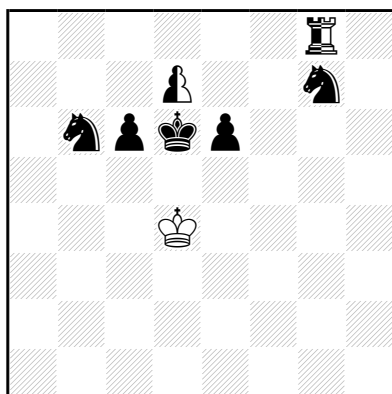


h#2 2 solutions (2+6+2)  
♞= Grasshopper

- I. 1.c5 d8=nG+ 2.nGxa5 nGnd5#  
II. 1.Bxa5 d8=nS 2.b5 nRxa5#

Thematical pieces: nPd7 and nRa1.  
This problem belongs to so called "ANI" - type which is allowed in this tournament!

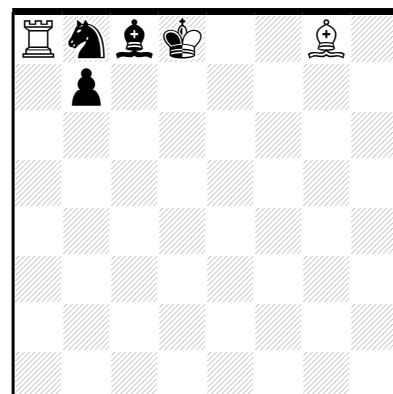
No.2. Scheme



h#2 (1+5+2)

- 1.Se8 nRg7 2.Sc8 d8=nR#.  
(Thematic figure here is nPd7)

No.3. Scheme

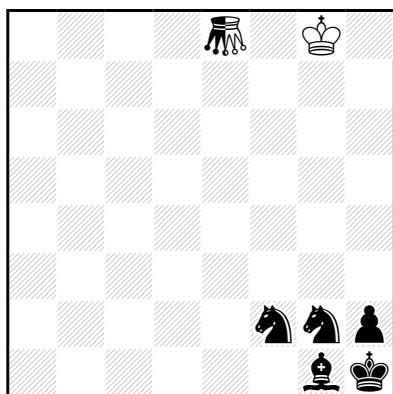


h#2 (2+3+1)

- 1.Sa6 Be6 2.Sc7 nKxc8#!  
(Thematic figure here is nKd8)

**But attention!** If you work with a neutral King, you should use only one neutral King on the board!

No.4. John Beasley  
feenschach 1973



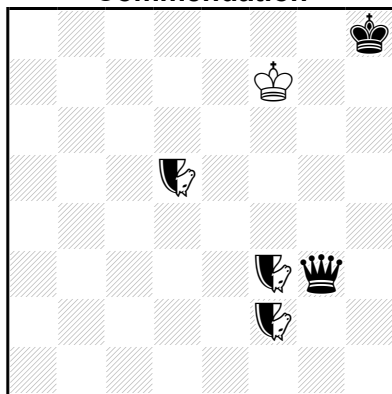
H#2\* (1+5+1)  
♞= Grasshopper

**Set-play:** 1...nGh8+ 2.nGf8 nGf1#!

**Real play:**

- 1.Se4 nGe3 2.Sg3 nGh3#!  
(Thematic figure here is nGe8)

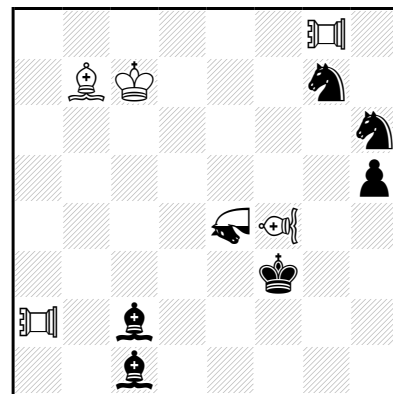
No.5. Lev Grolman  
Shakhmatnaya Kompozitsiya  
1999-2001  
Commendation



h#2 (1+2+3)  
2 solutions  
♞=Nightrider

- I. 1.nNc8 nNf4+ 2.Qg6+ nNxc6#  
II. 1.nNb5+ Kf8+ 2.Qd6+ nNxd6#  
(Thematic figure here is nNf2)

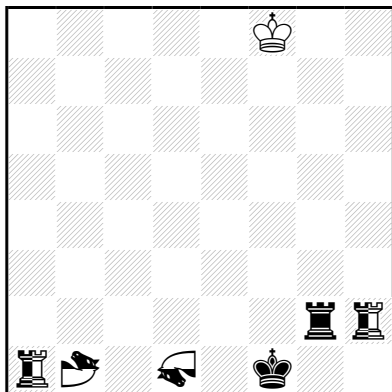
No.6. Mike Prcic  
diagrammes 2000



h#2 (5+6+1)  
2 solutions  
♞=Vao  
♞=Mao  
♞=Pao

- I. 1.Sf7 VAh6 2.Sf5 nMAg5#  
II. 1.Ba3 VAc1 2.Bd3 nMAd2#  
(Thematic figure here is nMAOe4)

**No.7. Petko A. Petkov**  
feenschach 2001



h#2 (1+2+4)

2 solutions

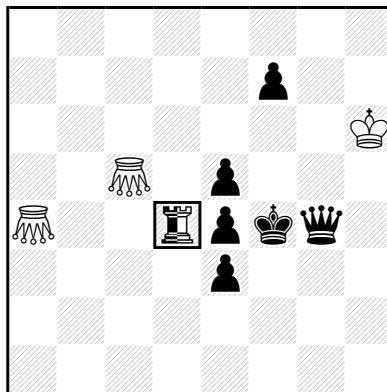
♞=Mao  
♞=Moa

I. 1.nMAc3 nMAxb1 2.Rc2  
nMA d2#

II. 1.nMOc3 nMOxd1 2.Rd2  
nMOne3#

(Thematic figures here are nMA d1  
and nMO b1)

**No.8. Chris Feather**  
StrateGems 2009



h#2 (3+6+1)

3 solutions

♞=Chameleon (Rook)  
♞=Grasshopper

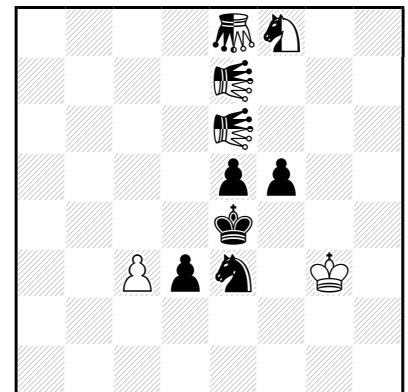
I. 1.nCc4=nCQ! Gc3 2.f5 nCQf1=  
nCS#

II. 1.Qg3 Kh5 2.nCRb4=nQ  
nCQe1=nCS#

III. 1.f6 nCRd5=nCQ+ 2.Kf5  
nCQd8=nCS#

(Thematic figure here is nCRd4)

**No.9. Julia Vysotska**  
Julia's Fairies 2012



h±2\* (2+5+4)

♞=Grasshopper  
♞=Locust

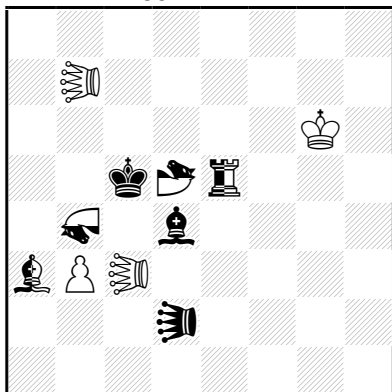
**Set-play:**

1...nSxe6 2.nSc7 nLOxc7-b7#

**Real play:**

1.nSn6 nSxe7 2.nSd5 nLOxd5-c4#  
(Thematic figures here are nLOe7  
and nLOe6)

**No.10. Georgy Evseev**  
14° T.T. Chess Composition  
Microweb 2004  
5th H.M.



H#2 (4+3+4)

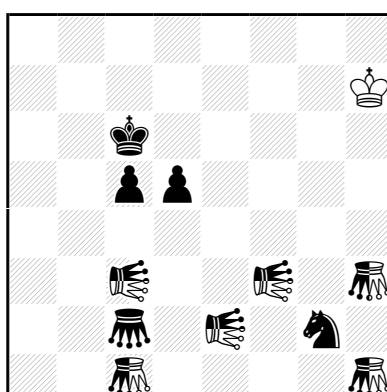
2 solutions

♞=Moa  
♞=Mao  
♞=Leo

1.LExb4 LExa3+ 2.LEb6 nMONb4#

1.LExd5 LExe5+ 2.LEc6 nMA d5#  
(Thematic figures here are nMA d5  
and nMO b4)

**No.11. Juraj Lorinc**  
StrateGems 2007



h#2 (1+5+6)

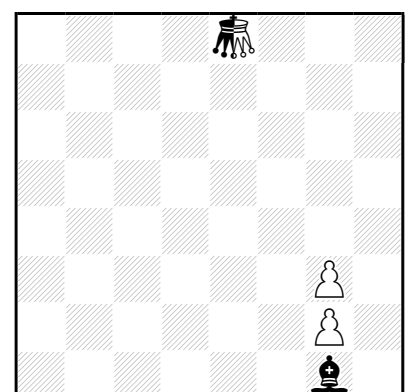
2 solutions

♞=Locust  
♞=Grasshopper

I. 1.Sf4 nLOxc2-b2 2.Se6 nLOxf3-  
g3#

II. 1.Sc4 nLOxg2-h2 2.Se6  
nLONxc3-b3# (Thematic figures  
here are nLOc3 and nLOf3)

**No.12. Scheme**



h#2 (2+1+1)

♞=Royal Grasshopper e8

1.Be3 g4 2.nrGe2 nrGh5#!

**Therefore:** every royal neutral  
piece (incl. Pawn!) can be thematic  
but only one such figure with Royal  
status on the board is allowed.