

# VARIANTIM

Bulletin of  
The Israel Chess Composition Society

## Michael Grushko 60 Jubilee Tourney – Announcement

Required are fairy-miniatures with free theme. All types of problems are accepted but with at least one fairy condition. All originals should be computer tested with any of the following programs (mentioning the program used): Popeye, WinChloe, Alybadix.

Judge: Michael Grushko.

Please send entries to the director, Paz Einat  
(paz@pazeinat.com; 45a Moshe Levi St. Nes Ziona, 74207,  
Israel) with the remark MG-60 JT Closing date: 31.05.2015

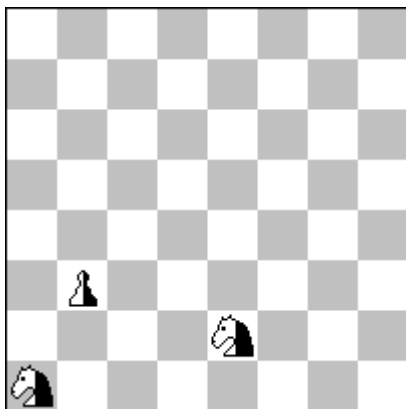
Example:

**Jubilee tourney Petko Petkov – 70**

**2012**

### Special Prize

Michael Grushko



C+ original

HS#7\* EinsteinChess

ParrainCirce RepublicanChess

( 0 + 0 +3 )

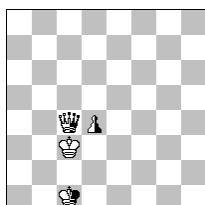
1....nSe2-c1=nP 2.nPc1-c2 nSa1\*b3=nB

3. nPc2\*b3=nS [+nPa4] nPa4\*b3=nS

[+nBc2] 4.nBc2\*b3=nR [+nSa4] nSa4-

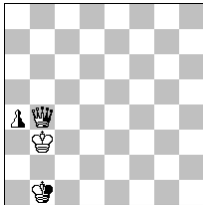
c3=nP [+nSd2] 5.nSd2\*b3=nB nPc3-c2

[+nRb2] 6.nBb3\*c2=nR nRb2\*c2=nQ



[·nPd2] 7.nPd2-d4 [+nRc4][+nKc1+]

nQc2\*c4[+wKc3]# 8. wKc3\*c4?? (+nRc5)+ Feiry mat!



1. nSa1-c2=nP nPb3-b2 2.nPc2-c3

nSe2\*c3=nB 3.nPb2\*c3=nS [+nPd4]

nPd4\*c3=nS [+nBb2] 4.nBb2\*c3=nR

[+nSd4] nSd4-b3=nP [+nSa2]

5. nSa2\*c3=nB nPb3-b2 [+nRc2]

6. nBc3\*b2=nR nRc2\*b2=nQ [+nPa2]

7. nPa2-a4 [+nRb4][+nKb1] + nQb2\*b4

[+wKb3] # 8. wKc3\*c4?? (+nRc5)+ Feiry mat!

A problem consisting of only three neutral pieces, showing an interesting and long play in two phases, with multiple transformations of material. Difficult to compose, although, at the first sight it seems elementary (Judge Petko A. Petkov)