



**Julia's Fairies** is pleased to announce its composing tournament within the 58<sup>th</sup> World Congress of Chess Composition

## 1<sup>st</sup> RIGA BLACK BALSAM TT

**Judge: Julia Vysotska**

### **Theme: Help-play with Half-neutral pieces:**

Thematic play of half-neutral pieces in H#/=/=, HS#/=/= problems in 2-5 moves; Ser-H#/=/=, Ser-HS#/=/= problems up to 10 moves. Other fairy pieces (also standard neutral pieces) are allowed. Fairy conditions are NOT allowed.

Depending on the number of entries the tournament will either have one section for all problems, or will be split in two sections: Section A (H#/=/=, Ser-H#/=/=) and Section B (HS#/=/=, Ser-HS#/=/=).

**Computer tested problems only!** Half-neutral pieces are fully implemented in the last version of *Popeye* and also most of problems can be tested by *WinChloe*, except half-neutral King (and Royal piece).

Please send entries to *Julia Vysotska* by e-mail at [julia@juliasfairies.com](mailto:julia@juliasfairies.com) until **July, 31<sup>st</sup>, 2015** or during the Congress, for *participants only*, until **17:00 of August, 3<sup>rd</sup>, 2015**.

### **Prizes** are bottles of **RIGA BLACK BALSAM Currant**.

The tourney is open worldwide, however the prizes are for congress participants only.

**Half-neutral piece:** Piece which can exist in black, white or neutral state and changes its state by the rules:

- A piece in the neutral state may be moved by Black or White, and after move it changes into black or white state respectively.
- A piece in the white state may be moved only by White, and after move it changes into its neutral state.
- A piece in the black state may be moved only by Black, and after move it changes into its neutral state.
- Only a half-neutral pawn can promote into half-neutral figure.

Additional features of half-neutral pieces:

- Castling with half-neutral King is possible with hK in white phase on e1 (White castling) and hK in black phase on e8 (Black castling). After castling the hK becomes half-neutral phase and can become mate.
- A play is possible also with only one half-neutral King (or Royal piece) on the board (in white, black or neutral phase).
- By the notation: "h"=half-neutral piece, states are marked with "w"(white), "b"(black) and "n"(neutral).

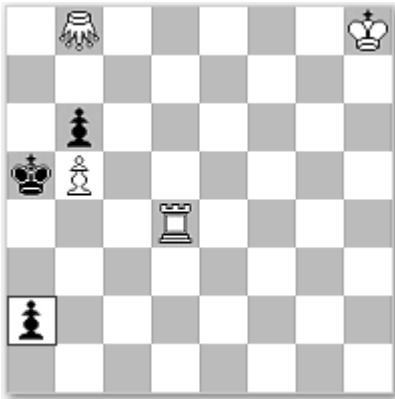
See **Examples** below or examples with animated solutions in the announcement published on JF – <http://juliasfairies.com/tourneys/announcements/jf-1st-balsam/>.

**Welcome to participate! – Julia**

**June, 17<sup>th</sup>, 2015**

## Examples

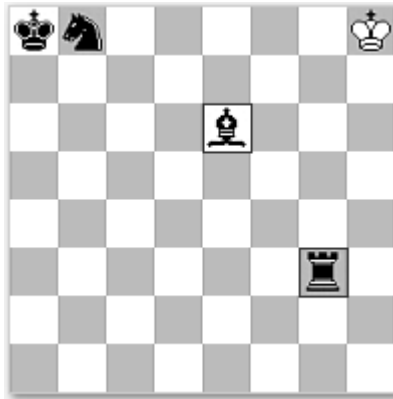
### No.1 SCHEME



h#1      3 solutions      (4+3)  
Half-neutral Pa2  
Grasshopper b8

- I. 1.hPa2-a1=nhS nhSa1-b3=wh #
- II. 1.hPa2-a1=nhB nhBa1-c3=wh #
- III. 1.hPa2-a1=nhG nhGa1-e5=wh #

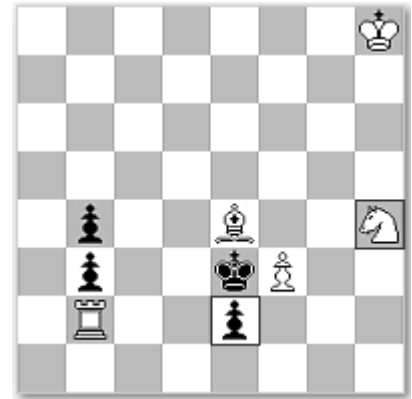
### No.2 SCHEME



h#2      2 solutions      (1+4)  
Half-neutral Rg3, Be6

- I. 1.hRg3-g1=nh nhRg1-a1=wh +  
2.hBe6-a2=nh nhBa2-d5=wh #
- II. 1.hBe6-h3=nh nhBh3-g2=wh +  
2.hRg3-f3=nh nhRf3-a3=wh #

### No.3 SCHEME

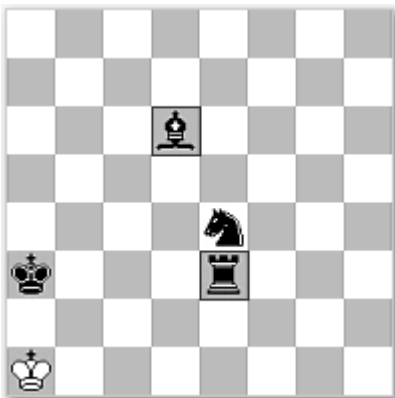


h#2      (5+4)  
Half-neutral Pe2, Sh4

- I. 1.hPe2-e1=nhS hSh4-f5=nh +  
2.nhSf5-d4=bh nhSe1-g2=wh #
- II. 1.hPe2-e1=nhB hSh4-g2=nh +  
2.nhSg2-f4=bh nhBe1-f2=wh #

### No.4 Vlaicu Crisan

Ded. to L. Riguet  
Phenix 2000  
1st Hon.men.

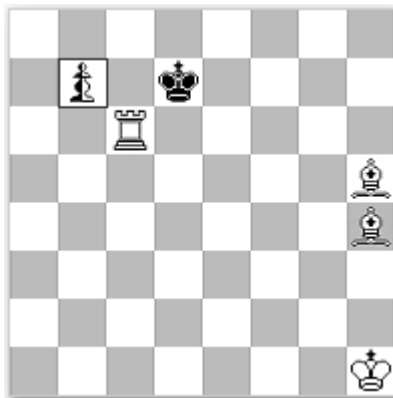


ser-h#4      (1+4)  
Half-neutral Re3, Bd6

- I. 1.Se4-c3 2.hRe3-h3=nh  
3.hBd6-g3=nh 4.Sc3-a4  
nhBg3-d6=wh #
- II. 1.Se4-c5 2.hBd6-f8=nh  
3.hRe3-e7=nh 4.Sc5-a4  
nhRe7-e3=wh #

### No.5 Petko A. PETKOV

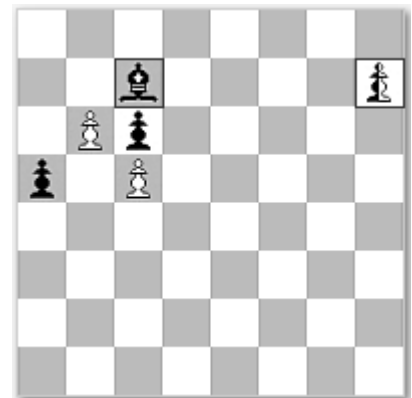
feenschach 2001



ser-h#6\*      2 solutions      (4+1+1)  
Half-neutral Pb7

- Setplay: 1...nhPb7-b8=nhS=wh #
- I. 1.nhPb7-b5=bh 2.hPb5-b4=nh  
3.nhPb4-b3=bh  
4.hPb3-b2=nh 5.nhPb2-b1=bhB  
6.hBb1-g6=nh nhBg6-e8=wh #
  - II. 1.nhPb7-b6=bh 2.hPb6-b5=nh  
3.nhPb5-b4=bh 4.hPb4-b3=nh  
5.nhPb3-b2=bh 6.hPb2-b1=nhQ +  
nhQb1-b7=wh #

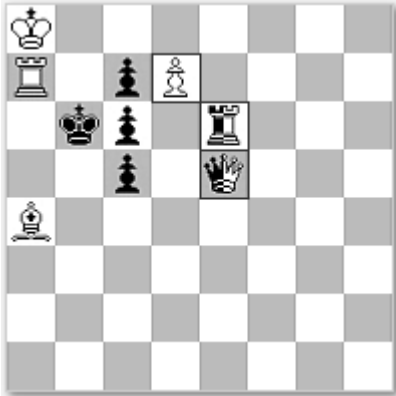
### No.6 SCHEME



ser-h#8      (2+3+1)  
Half-neutral Royal Ph7  
Chameleon Bc7

- 1.nrhPh7-h6=bh 2.rhPh6-h5=nh  
3.nrhPh5-h4=bh 4.rhPh4-h3=nh  
5.nrhPh3-h2=bh 6.rhPh2-  
h1=rhcR=nh 7.nrchRh1-  
h8=nrchQ=bh 8.rchQh8-  
a8=rchS=nh b6-b7 #

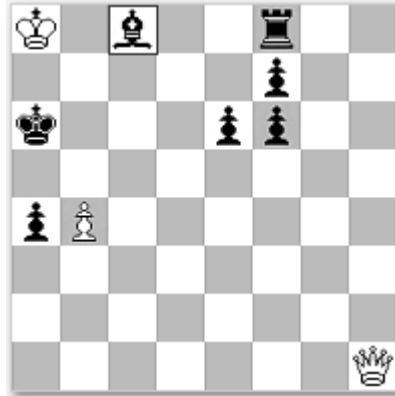
### No.7 SCHEME



hs#2 2 solutions (4+4+2)  
Half-neutral Pd7, Qe5, Re6

- I. 1.hPd7-d8=nhS nhQe5-h8=bh  
2.nhRe6\*c6=wh + nhSd8\*c6=bh #  
II. 1.hPd7-d8=nhB nhRe6-e8=bh  
2.nhQe5\*c7=wh + nhBd8\*c7=bh #

### No.8 SCHEME



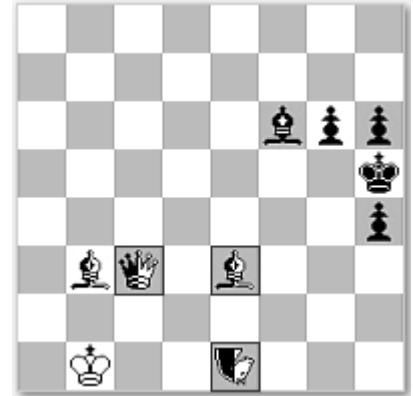
hs#4 (3+7)  
Half-neutral Bc8

Try 1. Qb7# ?

- 1... hBc8xb7=nh - illegal self-check!  
1.Qh1-h2 hBc8-d7=nh +  
2.Qh2-b8 nhBd7-b5=bh  
3.Qb8-d8 hBb5-e8=nh  
4.Qd8-d6+ nhBe8-c6=bh #

### No.9 Julia Vysotska

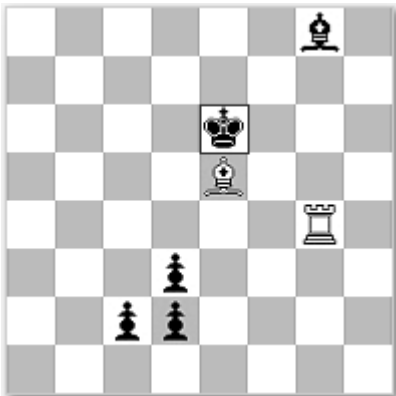
StateGems No.71, FB1479



hs#2\* (1+6+3)  
Half-neutral Ne1, Qc3, Be3  
Nightrider e1

- Setplay: 1...nhBe3-g5=bh 2.nhQc3-f3=wh+ nhNe1\*f3=bh #  
1.nhBe3-c1=wh nBb3-e6 2.nhNe1-d3=wh+ nhQc3\*d3=bh#

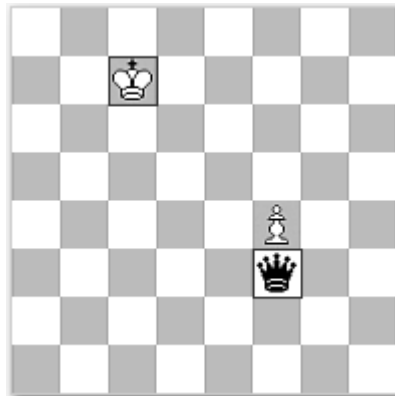
### No.10 SCHEME



h#2 2 solutions (2+5)  
Half-neutral Ke6

- I. 1.hKe6-d5=nh + nhKd5-d4=wh  
2.Bg8-b3 hKd4-c3=nh #  
II. 1.hKe6-f7=nh + nhKf7-g7=wh  
2.Bg8-h7 hKg7-h8=nh #

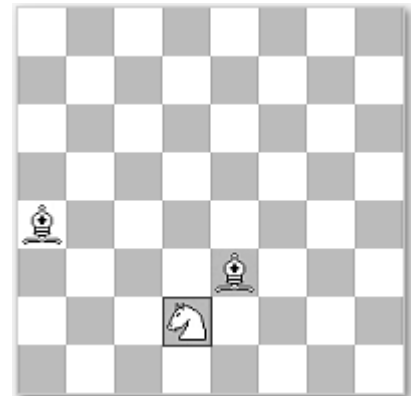
### No.11 SCHEME



hs=2 2 solutions (2+1)  
b) Pf4→h3; c) Pf4→e4  
Half-neutral Kc7, Qf3

- a) 1.hKc7-c8=nh hQf3\*f4=nh  
2.nhQf4-c7=wh + nhKc8\*c7=bh =  
b) 1.hKc7-d8=nh hQf3\*h3=nh  
2.nhQh3-d7=wh + nhKd8\*d7=bh =  
c) 1.hKc7-b8=nh hQf3\*e4=nh  
2.nhQe4-b7=wh + nhKb8\*b7=bh =

### No.12 SCHEME



h#1,5 b) rhSd2→d1 (3+0)  
Half-neutral Royal Sd2

- a) 1...rhSd2-b3=nh +  
2.nrhSb3-a1=bh Be3-d4 #  
b) 1...rhSd1-f2=nh +  
2.nrhSf2-h3=bh Ba4-d7 #