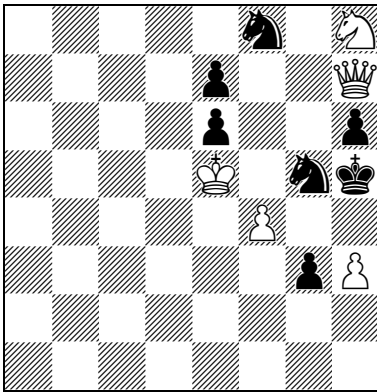


Bruno Stucker
Original



hs#3 5+7
Protean Chess
(Frankfurter Schach)
02) – 64) see below!

Ke5 Qh7 Sh8 Pf4h3 - Kh5 Sf8g5 Pe6e7g3h6

FEN: 5n1N/4p2Q/4p2p/4K1nk/5P2/6pP/8/8

C+ (Popeye Windows-64Bit v4.87)

64 variations to checkmate the white king

64 consecutive tasks, each multiple has a different solution game, and yet all multiples are connected by the same basic idea. Both the white and black inventiveness in the solution games is amazingly rich; there are also conversions (even all-conversion), sacrifices, zugzwang, hiding moves, and board-dominating moves to be seen. 1 piece alone can keep the king or a royal piece under control in Protean Chess, both for white and black, e.g. a king can even mate the other king (as a royal piece) alone!

01) Diagram	23) c. ♔h2→e6 ♞e2→f6	45) c. ♔g1→g3 ♞g7→f7
02) cont. ♔h7→d5 - ♜g3	24) c. ♞h8→g6 ♞f4→e4	46) c. ♔h7→e6 - ♜f3
03) c. - ♜e6 - ♞g5	25) c. ♞h4→g5	47) c. ♔g3→f6 - ♞g5
04) c. ♜e7→e4 + ♞d4	26) c. ♜h6→h7 - ♜d4	48) c. ♔e6→f1 ♔f6→d7
05) c. ♞d4→g6 ♞e4→g4	27) c. ♜e7→d7 ♞g3→g4	49) c. ♔d7→g1 + ♜h4
06) c: ♜g4→e4 - ♞h8	28) c. ♞f6→g7	50) c. ♞h3 ♞f7→♜h2
07) c. ♜e4→h4 + ♞e6	29) c. ♔e6→g8 ♞h3→f4	51) c. ♜h2→f2
08) c. - ♞e6 + ♞g8	30) c. ♞e4→f6	52) c. ♔g1→d7 - ♜h4
09) c. ♞g8→h8	31) c. ♔g8→e4 ♞f6→f7	53) c. ♔f1→h7 ♜f2→e2
10) c. - ♞h8 ♞f8→g1	32) c. - ♞f4 - ♞f7	54) c. ♔d7→c8 ♜e2→f2
11) c. + ♜c4 + ♜g3	33) c. ♞g6→h3 ♜d7→g3	55) c. + ♞g5
12) c. - ♞g6 ♞g1→f8	34) c. ♔e4→e3 - ♞h3	56) c. ♔h5→f7 ♞h3→h4
13) c. + ♞h8	35) c. ♔e3→g8 + ♞g6	57) c. ♞h4→c3 - ♜f2
14) c. ♜c4→e7 ♞g3→e2	36) c. ♔e5→f8 ♔g8→h8	58) c. ♔c8→h4 - ♞c3
15) c. ♔d5→e6 ♜h4→g2	37) c. + ♞h4	59) c. ♞g5→f5 + ♜e7
16) c. ♜e2→d3 ♞g2→d4	38) c. ♜g4→f7 ♜h7→h6	60) c. ♔h4→b8 ♜e7→f6
17) c. ♜d3→c3	39) c. ♔f8→h7 ♞g6→f7	61) c. ♜h6→f5 + ♞g8
18) c. ♔e6→c8 ♜c3→e6	40) c. - ♞f7 - ♜g3	62) c. ♜f6→g7 - ♞g8
19) c. ♞f8→c1	41) c. ♔g8→g1 + ♞e6	63) c. ♔h7→h4 ♔b8→f1
20) c. ♔c8→h2 ♜e6→e2	42) c. ♞g7→d3	64) c. ♔f1→c3 + ♞g8
21) c. + ♞h4	43) c. ♜d3→g7 ♞h4→h3	
22) c. ♜e2→g3 ♞c1→e2	44) c. - ♞e6 + ♜f3	

Solutions:

01) 1.Qh7-f5! (1.Sh8-g6? disguises the queen) **1. - g3-g2 2.Sh8-g6 g2-g1=B!** **3.Qf5-g4+ Kh5*g6=rS#** (only possible move; black royal knight, i.e. sS incl. bK properties; after 2. - g2-g1=Q? prevents 3. - Qg1*g4)

02) 1.h3-h4! Kh5*h4=rPP! (black royal Protean pawn, i.e. bP incl. bK properties, moves like wP) **2.Qd5-d4** (block) **2. - h6-h5!** (block for the srPPh4) **3.Sh8-g6+ Sf8*g6#** (only possible move, since 3. - rPPh4-h5?? is blocked)

03) 1.Sh8-g6! Sf8-h7! (1. - Sf8-e6?) **2.Ke5-e6+ Sh7-g5+ 3.Ke6*e7=rPP!** (white royal Protean pawn, i.e. wP incl. wK properties, moves like bP) **3. - Kh5*g6=rS#** (only possible move. The wrPPE7 is attacked, **4.rPPE7-e6?? & 4.rPPE7-e5??** (because of bSg5 & brSg6); thus mate, because wrPPE7 incl. wK-properties)

04) 1.Sh8-g6! Kh5*g6=rS+! (black royal knight, i.e. bS incl. bK-properties) **2.Ke5*e4=rPP!** (white royal protean pawn, i.e. wP incl. wK-properties, moves like bP) **2. - rSg6-e7!!** (a hiding place in the middle of the board!) **3.Qd5-e6+** (check, because the bSe7 carries the properties of the bK) **3. - Sf8*e6=Q#** (only possible move, since the wQe6 covers all the escape squares of the brSe7 - which carries the bK properties - **board control by white**. The wrPPE4 is attacked, **4.rPPE4-e3??** (because of bQe6); thus mate, wrPPE4 incl. wK). **Super exciting!**

05) 1.Qd5-e6! Sf8*e6=Q+! (black queen) **2.Ke5*e6=rQ!** (white royal queen, i.e. wQ incl. wK-properties) **2. - g4*h3=PP!** (black Protean pawn, i.e. bP, moves like wP) **3.rQe6*h3=rP!** (white royal pawn, i.e. wP incl. wK properties, moves like wP) **3. - Kh5-h4#** (zugzwang, only possible move. The wrPh3 is attacked, **4.rPh3-h4??** (because of bKh4); hus mate, since wrPh3 incl. wK). **Due to the sacrifices and color changes of the queens, the wKe5 could be led to h3!**

06) 1.h3-h4! Kh5-g4! 2.Ke5*e4=rPP! (white royal Protean pawn, i.e. wP incl. wK properties, moves like bP) **2. - Kg4*f4=rPP!** (black royal Protean pawn, i.e. bP incl. bK-properties, moves like wP) **3.Qd5-e5+!** (check, because the brPPf4 carries the properties of the bK) **3. - rPPf4*e5=rQ#** (only possible move, 3. - rPPf4-f5?? (because of wQe5). The wrPPE4 is attacked, **4.rPPE4-e3??** (because of brQe5); thus mate, because wrPPE4 incl. wK)

07) 1.g6-g7! Sf8*e6=PP! (black Protean pawn, i.e. bP, moves like wP) **2.Ke5*e6=rP+!** (white royal pawn, i.e. wP incl. wK properties, moves like wP) **2. - Kh5-g6 3.g7-g8=Q+! Kg6-f6#** (only possible move. The wrPe6 is attacked, **4.rPe6-e7??** (because of bKf6); thus mate, because wrPe6 incl. wK). **Two white queens on the board, but the black king mates the wrBe6 merrily**

08) 1.Qd5*g8=S! (white knight) **1. - Sf8*g6=PP!** (black Protean pawn, i.e. bP, moves like wP) **2.Ke5-f6 PPg6-g7! 3.Kf6*g7=rP!** (weisser royaler Bauer, d.h. wP incl. wK-properties, zieht wie wP) **3. - Kh5-g6#** (zugzwang, only possible move. The wrPg7 is attacked, **4.rPg7-g8=~??** (because of wSg8); thus mate, because wrPg7 incl. wK)

09) 1.Qd5-f7!! Sf8-e6! 2.Ke5*e6=rS! (white royal knight, i.e. wS incl. wK-properties) **2. - Sh8*g6=PP!** (black Protean pawn, i.e. bP, moves like wP) **3.rSe6-f8!!** (a super pretty hiding move!) **3. - PPg6*f7=Q#** (zugzwang, only possible move, since **3. - PPg6-g7??** (because of the pin). The wrSf8 s attacked, **4.rSf8~??** (bQf7 covers all escape squares, **board control by black**); thus mate, because wrSf8 incl. wK)

10) 1.Qd5-f3+! Sg1*f3=Q! (black queen) **2.f4-f5!** (covers the escape square g6) **2. - Qf3*f5=PP!** (black Protean pawn, i.e. bP, moves like wP) **3.Ke5*f5=rP!** (white royal pawn, i.e. wP incl. wK-properties, moves like wP, thus g6 is covered) **3. - Kh5-g5#** (zugzwang, only possible move, since **3. - Kh5*g6=rPP??** (because of wrPf5). The wrPf5 is attacked, **4.rPf5-f6??** (because of bKg5); thus mate, because wrPf5 incl. wK)

11) 1.Ke5-d4+! Kh5*g6=rPP! (black royal Protean pawn, i.e. bP incl. bK-properties, moves like wP) **2.Kd4*c4=rPP!** (white royal Protean pawn, i.e. wP incl. wK-properties, moves like bP) **2. - Sg1-e2! 3.Qd5-f7+ rPPg6*f7=rQ#** (only possible move, since **3. - rPPg6-g7??** (because of wQf7). The wrPPc4 is attacked, **4.rPPc4-c3??** (because of bSe2); thus mate, because wrPPc4 incl. wK)

12) 1.f4-f5! Sf8-h7! (1. - Sf8-d7+?) **2.f5-f6! Sh7*f6=PP!** (black Protean pawn, i.e. bP, moves like wP) **3.Ke5*f6=rP+!** (white royal pawn, i.e. wP incl. wK-properties, moves like wP) **3. - Kh5-g6#** (only possible move. The wrPf6 is attacked, **4.rPf6-f7??** (because of bKg6); thus mate, because wrPf6 incl. wK)

13) 1.Qd5-c5!! g3-g2 2.Ke5-d5 g2-g1=B!! 3.Kd5*c4=rPP+! (white royal Protean pawn, i.e. wP incl. wK-properties, moves like bP) **3. - Lg1*c5=Q#** (only possible move, after **2. - g2-g1=Q?** prevents **3. - Qg1-g5**. The wrPPc4 is attacked, **4.rPPc4-c3??** (because of bQc5); thus mate, because wrPPc4 incl. wK)

14) 1.Ke5-f5! e7-e5 2.f4*e5=PP! (white Protean pawn, i.e. wP, which moves like a bP, block) **2. - e2-e1=S!! 3.Qd5-f3+ Se1*f3=Q#** (only possible move)

15) 1.Ke5-f5! g2-g1=Q!! 2.Qe6-e4 (block) 2. - Qg1-g5+ 3.f4*g5=Q+ (white queen) 3. - h6*g5=Q# (only possible move; after 1. - g2-g1=R? 2.Qe6-e4 Rg1-g5+ 3.f4*g5=R+ h6*g5=R+ followed by 4.Kf5-f4!)

16) 1.h3-h4! Kh5*h4=rPP! (black royal Protean pawn, i.e. bP incl. bK-properties, moves like wP) 2.Ke5*d4=rPP! (white royal Protean pawn, i.e. wP incl. wK-properties, moves like bP) 2. - h6-h5 (block) 3.Qe6-f6+ e7*f6=Q# (only possible move. The wrPPd4 is attacked, 4.rPPd4-d3?? (because of bPd3); thus mate, because wrPPd4 incl. wK)

17) 1.Ke5*d4=rPP! (white royal Protean pawn, i.e. wP incl. wK-properties, moves like bP) 1. - Sf8-g6 2.rPPd4-d3!! Sg6-h4! (block) 3.Qe6-f5+ Sh4*f5=Q# (only possible move. The wrPPd3 is attacked, 4.rPPd3-d2?? (because of bPc3); thus mate, because wrPPd3 incl. wK)

18) 1.Qc8-c1! (1.Qc8-c3? covers h3) Kh5-h4 2.Sh8-g6+ Kh4*h3=rPP! (black royal Protean pawn, i.e. bP incl. bK-properties, moves like wP) 3.Qc1-e3+ d4*e3=Q# (only possible move, 4.rPPh3-h4?? (because of wSg6), for once the wK stays on the board again...)

19) 1.Sh8-f7! Kh5-g6 2.Ke5*e6=rPP! (white royal Protean pawn, i.e. wP incl. wK-properties, moves like bP) 2. - h6-h5 (block) 3.Qc8-g8+ Kg6-f6# (only possible move, since 3. - Kg6-f5?? (because of wrPPe6). The wrPPe6 is attacked, 4.rPPe6-e5?? (because of bKf6); thus mate, because wrPPe6 incl. wK)

20) 1.Sh8-g6! Kh5*g6=rS+! (black royal knight, i.e. sS incl. bK-properties) 2.Ke5*d4=rPP! (white royal Protean pawn, i.e. wP incl. wK-properties, moves like bP) 2. - rSg6-h4!! (hiding move) 3.Qh2-g3+ rSh4-f5# (only possible move, since wQg3 covers all other escape squares of rSh4, **board control by white**. The wrPPd4 is attacked, 4.rPPd4-d3?? (because of bSc1); thus mate, because wrPPd4 incl. wK)

21) 1.Ke5-e6! e2-e1=B!! (1. - e2-e1=Q+?) 2.Ke6*e7=rPP! (white royal Protean pawn, i.e. wP incl. wK-properties, moves like bP) 2. - Be1*h4=PP!! (black Protean pawn, i.e. bP, moves like wB. Block, thanks to the transformation into the black Protean pawn the square e7 is not threatened) 3.Qh2-e2+ Sc1*e2=Q# only possible move. The wrPPe7 is under attack, 4.rPPe7-e6?? (because of bQe2); thus mate, because wrPPe7 incl. wK)

22) 1.Sh8-g6! Se2*f4=PP+! (black Protean pawn, i.e. bP, moves like wP) 2.Ke5*f4=rP! (white royal Protean pawn, i.e. wP incl. wK-properties, moves like wP) 2. - e7-e6! 3.Qh2-e2+ Kh5*g6=rS# (only possible move. The wrPPf4 is attacked, 4.rPPf4-f5?? (because of bPe6); thus mate, because wrPPf4 incl. wK)

23) 1.Sh8-g6! Kh5*g6=rS+! (black royal knight, i.e. sS incl. bK-properties) 2.Ke5*d4=rPP! (white royal Protean pawn, i.e. wP incl. wK-properties, moves like bP) 2. - rSg6*f4=rPP+!! (black Protean pawn, i.e. bP, moves like wP) 3.Qe6-e4+ Sf6*e4=Q# (only possible move, since 3. - rPPf4-f5?? (because of wQe4). The wrPPd4 is attacked, 4.rPPd4-d3?? (because of bQe4); thus mate, because wrPPd4 incl. wK)

24) 1.Ke5-f4! Kh5*g6=rS+! (black royal knight, i.e. sS incl. bK-properties) 2.Kf4*g3=rPP! (white royal Protean pawn, i.e. wP incl. wK-properties, moves like bP) 2. - rSg6-h8!! (hiding move) 3.Qe6-g8+ Sf6*g8=Q# (only possible move, since the wQf8 covers all escape squares of the rSh8, **board control by white**. The wrPPg3 is attacked, 4.rPPg3-g2?? (because of bQg8); thus mate, because wrPPg3 incl. wK)

25) 1.Qe6-b3!! Sf6*e4=PP+! (black Protean pawn, i.e. bP, moves like wP) 2.Ke5*e4=rP! (white royal Protean pawn, i.e. wP incl. wK-properties, moves like wP) 2. - Kh5*g5=rPP! (black royal Protean pawn, i.e. bP, moves like wP) 3.Qb3-e3+ d4*e3=Q# (only possible move, since 3. - rPPg5-g6?? is blocked and 3. - rPPg5*h6=rPP?? (because of wQe3). The wrPPe4 is attacked, 4.rPe4-e5?? (because of bQe3); thus mate, because wrPPe4 incl. wK)

26) 1.h3-h4! Sf6*e4=PP! (black Protean pawn, i.e. bP, moves like wP) 2.Ke5*e4=rP! (white royal Protean pawn, i.e. wP incl. wK-properties, moves like wP) 2. - h7*g6=S (black knight, block) 3.Qe6-g4+ Kh5*g4=rQ# (only possible move. The wrPe4 is attacked, 4.rPe4-e5?? (because of bSg6); thus mate, because wrPe4 incl. wK)

27) 1.Ke5*f6=rS+! (white royal knight, i.e. wS incl. wK-properties) 1. - Kh5*g5=rPP+! (black royal Protean pawn, i.e. bP, moves like wP) 2.rSf6-e8!! (hiding move) 2. - h7*g6=S!! (black knight) 3.Qe6-e5+ Sg6*e5=Q# (only possible move, since 3. - rPPg5-g6?? (because of bSg6). The wrSe8 is attacked, all

escape squares are covered by the bQe5, **board control by black**; thus mate, because wrSe8 incl. wK). **Highly complex solution game!**

28) 1.Ke5-f4! Sg7-f5!! 2.e4*f5=S! (white knight) **2. - d7*e6=Q!** (black queen) **3.Sf5-g3+ Kh5*g6=rS‡** (only possible move, the block of wSg3 is very pretty, for once the wK stays on the board...)

29) 1.Qg8-b3! Sg7-e8 2.Ke5-f5 d7-d6 3.Qb3-h3+! g4*h3=Q‡ (only possible move). Without the wSg6 there is the secondary solution 1.g5-g6 d7-d6+ 2.Ke5*d6=rPP Kh5*g6=rPP 3.Qg8-e6+ Sg7*e6=Q‡

30) 1.f4-f5! Sg7*f5=PP! (black Protean pawn, i.e. bP, moves like wP) **2.Qg8-b8!!** (a pretty move!) **2. - Kh5*g6=rS+!** (black royal knight, i.e. sS incl. bK-properties) **3.Ke5*f5=rP+!** (white royal pawn, i.e. wP incl. wK-properties, moves like wP) **3. - rSg6-h4‡** (only possible move, since wPf6 protects e7 and all other escape squares are covered by wQb8, **board control by white**. The wrPf5 is attacked, **4.rPf5-f6??** (because of wPf6); thus mate, because wrPf5 incl. wK)

31) 1.Ke5-f6! h7*g6=S!! (black knight; the wS must be captured, since black wants to mate on g6, but this makes h4 an escape square) **2.Qe4-e8!!** (block) **2. - Sg6-h4!** (block, replacement for wSg6) **3.Kf6*g7=rS+!!** (white knight) **Kh5-g6‡** (only possible move. The wrSg7 is attacked, the escape squares f5 & h5 are covered by the sK, e6 is covered by the bPd7 and e8 is now blocked, **board control by black**; thus mate, because wrSg7 incl. wK). **Highly complex!**

32) 1.Ke5-f4! g4-g3 2.Kf4*g3=rPP! (white royal Protean pawn, i.e. wP incl. wK-properties, moves like bP) **2. - h7*g6=S!** (black knight, block) **3.Qe4-g4+ Kh5*g4=rQ‡** only possible move. The wrPPg3 is attacked, **4.rPPg3-g2??** (because of brQg4); thus mate, because wrPPg3 incl. wK)

33) 1.Ke5-f6! g4*h3=S+!! (black knight) **2.Kf6*g7=rS+!!** (white royal knight, i.e. wS incl. wK-properties) **2. - Kh5*g5=rPP!** (black royal Protean pawn, i.e. bP incl. bK-properties, moves like wP) **3.Qe4-g6+ h7*g6=Q‡** (only possible move. The wrSg7 is attacked, **4.rSg7~??** (the bQg6 covers all escape squares, **board control by black**); thus mate, because wrSg7 incl. wK). **Wow, highly complex!**

34) 1.Ke5-f4! h7-h6! 2.g5*h6=PP!! (white Protean pawn, i.e. wP, moves like bP) **2. - Kh5*h6=rP!!** (black royal pawn, i.e. bP incl. bK-properties, moves like bP) **3.Kf4*g4=rPP+!** (white royal Protean pawn, i.e. wP incl. wK-properties, moves like bP) **3. - rPh6-h5‡** (only possible move, especially g6 is no longer an escape square. The wrPPg4 is attacked, **4.rPPg4-g3??** (because of bPg3); thus mate, because wrPPg4 incl. wK). **Highly complex solution game!**

35) 1.Ke5-f4! Kh5*g6=rS+! (black royal knight, i.e. sS incl. bK-properties) **2.Kf4*g4=rPP!** (white royal Protean pawn, i.e. wP incl. wK-properties, moves like bP) **3. - rSg6-e7!!** (hiding move in the middle of the board) **3.Qg8-e6+! Sg7*e6=Q‡** (only possible move, since **3. - rSe7~??** (bQg6 covers all escape squares, **board control by white**). The wrPPg4 is attacked, **4.rPPg4-g3??** (because of bPg3); thus mate, because wrPPg4 incl. wK). **Highly complex!**

36) 1.Kf8*g7=rS+! (white royal knight, i.e. wS incl. wK-properties) **1. - Kh5*g5=rPP!** (black royal Protean pawn, i.e. bP incl. bK-properties, moves like wP) **2.rSg7-e8!!** (hiding move) **2. - h7*g6=S!** (black knight) **3.Qh8-e5+! Sg6*e5=Q‡** (only possible move, since **3. - rPPg5-g6??** (because of bSg6). The wrSe8 is attacked, **4.rSe8~??** (the bQe5 covers all escape squares, board control by Black); thus mate, because wrSe8 incl. wK). **Highly complex!**

37) 1.Kf8-g8! Sg7-e8 2.Kg8*h7=rPP!! (white royal Protean pawn, i.e. wP incl. wK-properties, moves like bP) **2. - Se8-f6+! 3.g5*f6=S+!!** (white knight, **3.Qh8*f6=S‡??**) **3. - Kh5-h6‡** (only possible move, since **3. - Kh5*g6=S??** (because of wrPPh7). The wrPPh7 is attacked, **4.rPPh7-h6??** (because of bKh6); thus mate, because wrPPh7 incl. wK)

38) 1.Kf8*f7=rPP!! (white royal Protean pawn, i.e. wP incl. wK-properties, moves like bP) **1. - Kh5-g4 2.Qh8-e8!** (2.Qh8-c8+?) **2. - Kg4-f5 3.Qe8-e6+ Sg7*e6=Q‡** (only possible move. The wrPPf7 is attacked, **4.rPPf7~??** (because of bKf5); thus mate, because wrPPf7 incl. wK)

39) 1.Kh7-g8! Kh5-g6 2.Sf7-d6 Sg7-h5! (Block) **3.Qh8-g7+ Sh5*g7=Q‡** (only possible move)

40) 1.Qh8-e8+! Kh5-g4!! (tempo move) **2.Kh7*h6=rPP!** (white royal Protean pawn, i.e. wP incl. wK-properties, moves like bP) **2. - Kg4*h4=rPP!** (black royal Protean pawn, i.e. bP incl. bK-properties, moves like wP) **3.Qe8-h5+ Sg7*h5=Q‡** (only possible move. The wrPPh6 is attacked, **4.rPPh6*g5??** (because of bQh5); thus mate, because wrPPh6 incl. wK)

41) **1.Qg1-b1!! Kh5*h4=rPP!** (black royal Protean pawn, i.e. bP incl. bK-properties, moves like wP) **2.Kh7*h6=rPP!** (white royal Protean pawn, i.e. wP incl. wK-properties, moves like bP) **2. - rPPh4-h5!!** **3.Qb1-g6+! rPPh5*g6=rQ#** (only possible move. The wrPPh6 is attacked, **4.rPPh6-h5??** (because of brQg6); thus mate, because wrPPh6 incl. wK)

42) **1.Qg1-d1+! Kh5*h4=rPP!** (black royal Protean pawn, i.e. bP incl. bK-properties, moves like wP) **2.Kh7*h6=rPP!** (white royal Protean pawn, i.e. wP incl. wK-properties, moves like bP) **2. - Sd3-f4** **3.Qd1-h5+! Sf4*h5=Q#** (only possible move. The wrPPh6 is attacked, **4.rPPh6*g5??** (because of brQh5); thus mate, because wrPPh6 incl. wK)

43) **1.Qg1-d1+ Kh5-h4 2.Kh7*h6=rPP!** (white royal Protean pawn, i.e. wP incl. wK-properties, moves like bP) **2. - Kh4*h3=rPP!** (black royal Protean pawn, i.e. bP incl. bK-properties, moves like wP) **3.Qd1-h5+ Sg7*h5=Q#** (only possible move. The wrPPh3 is attacked, **4.rPPh3-h4??** (because of brQh5); thus mate, because wrPPh3 incl. wK)

44) **1.Qg1-a7!! Kh5*g5=rPP!** (black royal Protean pawn, i.e. bP incl. bK-properties, moves like wP) **2.Kh7*g7=rS+!** (white royal knight, i.e. wS incl. wK-properties) **2. - rPPg5-g6!! 3.Qa7-f7+ rPPg6*f7=rQ#** (only possible move, since 3. - rPPg6-g7???. The wrSg7 is attacked, brQf7 covers all escape squares, **board control by black**; thus mate, because wrSg7 incl. wK)

45) **1.Qg3-d6! Sf7-h8!!** (allows the wK to hide) **2.Kh7*h8=rS+!** (white royal knight, i.e. wS incl. wK-properties) **2. - Kh5*g5=rPP!** (black royal Protean pawn, i.e. bP incl. bK-properties, moves like wP) **3.Qd6-f6+ rPPg5*f6=rQ#** (only possible move, since 3. - rPPg5-g6?? (because of wQf6). The wrSh8 is attacked, **4.rSh8-f7/g6??** (because of brQf6), **board control by black**; thus mate, because wrSh8 incl. wK)

46) **1.Ke6*f7=rS+!** (white royal knight, thus wS incl. wK-properties) **1. - h6*g5=PP!** (black Protean pawn, i.e. bP, moves like wP) **2.rSf7-h8!!** (hiding move) **2. - Kh5-h6! 3.Qg3-h4+ Kh6-g7#** (only possible move, since 3. - Kh6-g6?? (because of wrSh8). The wrSh8 is attacked, **4.rSh8-f7/g6??** (because of bKg7), **board control by black**; thus mate, because wrSh8 incl. wK). **A beautiful mate by the black king, the black king can keep the white king under control all by itself, very interesting solution!**

47) **1.Qf6-c3!** (1.Qf6-f3+?) **1. - Kh5-g5!!** (tempo move) **2.Ke6*f7=rS+!** (white royal knight, i.e. wS incl. wK-properties) **2. - Kg5-h4! 3.rSf7*h6=rPP!!** (white royal Protean pawn, i.e. wP incl. wK-properties, moves like bP) **3. - Kh4-h5#** (only possible move, since 3. - Kh4-g5?? (because of wrPPh6). The wrPPh6 is attacked, **4.rPPh6-h5??** (because of bKh5); thus mate, because wrPPh6 incl. wK). **Highly complex, beautiful solution game with only 6 pieces!**

48) **1.Kf1-g2! Sf7-g5 2.Qd7-g7 Sg5*h3=PP!** (black Protean pawn, i.e. bP, moves like wP) **3.Kg2*h3=rP!!** (white royal pawn, i.e. wP incl. wK-properties, moves like a wP) **3. - Kh5-h4#** (zugzwang, only possible move. The wrPh3 is attacked, **4.rPh3-h4??** (because of bKh4); thus mate, because wrPh3 incl. wK). **Complex, beautiful solution game with only 6 pieces!**

49) **1.Qg1-g3! Sf7-g5 2.Kf1-g2 Sg5*h3=PP!** (black Protean pawn, i.e. bP, moves like wP) **3.Kg2*h3=rP!!** (white royal pawn, i.e. wP incl. wK-properties, moves like a wP) **3. - h4*g3=Q#** (zugzwang, only possible move. The wrPh3 is attacked, **4.rPh3-h4??** (because of bQg3); thus mate, because wrPh3 incl. wK)

50) **1.Qg1-g3! h2-h1=R+!!** (1. - h2-h1=Q+?) **2.Kf1-g2 Rh1*h3=S!** (black knight) **3.Kg2*h3=rS!!** (white royal knight, i.e. wS incl. wK-properties) **3. - h4*g3=Q#** (zugzwang, only possible move. The wrSh3 is attacked, **4.rSh3~??** (bQg3 covers all escape squares), **board control by black**; thus mate, because wrSh3 incl. wK). **A strategically exciting miniature and a super mating position!**

51) **1.Qg1-h1! Kh5-g4 2.Kf1*f2=rPP!** (white royal Protean pawn, i.e. wP incl. wK-properties, moves like a bP) **2. - h6-h5!** (waiting move) **3.Qh1-f3+ Kg4*f3=rQ#** (only possible move. The wrPPf2 is attacked, **4.rPPf2-g1=~??** (because of brQf3); thus mate, because wrPPf2 incl. wK)

52) **1.Sh3-g1!** (sacrifice) **1. - h2*g1=S!** (black knight) **2.Kf1*g1=rS!** (white royal knight, i.e. wS incl. wK-properties) **2. - Kh5-h4** (waiting move) **3.Qd7-g4+ Kh4*g4=rQ#** (only possible move. wrSg1 is attacked, **4.rSg1~??** (all escape squares are covered by brQg4, **board control by black**); thus mate, because wrSg1 incl. wK). **Complex game with only 6 pieces!**

- 53) 1.Sh3-g5! h6*g5=S+!** (black knight) **2.Kh7-h8! Kh5-h6 3.Qd7-h7+ Sg5*h7=Q#** (only possible move; the bPe2 prevents black zugzwang and thus secondary solutions)
- 54) 1.Sh3*f2=PP!** (white Protean pawn, i.e. wP, which moves like a bP) **1. - Kh5-g5!** (tempo move) **2.PPf2-f1=S!!** (white knight) **2. - Kg5-h4 3.Kh7*h6=rPP!** (white royal Protean pawn, i.e. wP incl. wK-properties, moves like a bP) **3. - Kh4-h5#** (zugzwang, only possible move, since 3. - Kh4-g5?? (because of brPPh6). The wrPPh6 is attacked, **4.rPPh6-h5??** (because of bKh5); thus mate, because wrPPh6 incl. wK). **Protean Chess with little material extremely exciting!**
- 55) 1.g5-g6!!** (square clearing and block, **1.g5*h6=PP?**) **1. - f2-f1=Q! 2.Sh3-g5! Qf1-f8! 3.Qc8-h3+ Kh5*g5=rS#** (only possible move; black royal knight, i.e. sS incl. bK-properties). **Again, a completely new solution idea and a very pretty mating position!**
- 56) 1.Kh7*h6=rPP!** (white royal Protean pawn, i.e. wP incl. wK-properties, moves like a bP) **1. - Kf7-g7+!** (check, since rPBh6 incl. wK) **2.rPPh6-h5! Kg7-h7 3.Qc8-h8+ Kh7*h8=rQ#** (only possible move. The wrPBh5 is attacked, **4.rPPh5-h4??** (because of bQh8 & wSh4); thus mate, because wrPPh5 incl. wK)
- 57) 1.Qc8-c7+! Kf7-e6 2.Kh7-g6! h6*g5=PP!** (black Protean pawn, i.e. bP, moves like wP) **3.Kg6*g5=rP!!** (white royal pawn, i.e. wP incl. wK-properties, moves like a wP) **3. - Ke6-f5#** (only possible move, since 3. - Ke6-f6?? (because of brPg5). The wrPg5 is attacked, **4.rPg5-g6??** (because of bKf5); thus mate, because wrPg5 incl. wK). **Very pretty zugzwang and mating position!**
- 58) 1.Kh7*h6=rPP!** (white royal Protean pawn, i.e. wP incl. wK-properties, moves like a bP) **1. - Kf7-g8!!** (1. - Kf7-g7+??, since rPPh6 incl. wK, so check!) **2.Qh4-e4! Kg8-h8 3.Qe4-h7+ Kh8*h7=rQ#** (only possible move. The wrPPh6 is attacked, **4.rPPh6-h5??** (because of bQh7); thus mate, because wrPPh6 incl. wK). **Complex strategy with 5 pieces and a super pretty mating position!**
- 59) 1.Qh4-g3!!** (1.Qh4-g4?? covers f5) **1. - Kf7-f6 2.Kh7*h6=rPP!** (white royal Protean pawn, i.e. wP incl. wK-properties, moves like a bP) **Kf6*f5=rPP!** (black royal Protean pawn, i.e. bP incl. bK-properties, moves like a wP) **3.Qg3-g6+ rPPf5*g6=rQ#** (only possible move, since 3. - rPPf5-f6?? (because of wQg6). The wrPPh6 is attacked, **4.rPPh6-h5??** (because of brQg6); thus mate, because wrPPh6 incl. wK)
- 60) 1.Kh7*h6=rPP!** (white royal Protean pawn, i.e. wP incl. wK-properties, moves like a bP) **1. - Kf7-g7+!** (check, because rPPh6 incl. wK-properties) **2.rPPh6-h5! Kg7-h7 3.Qb8-h8+ Kh7*h8=rQ#** (only possible move. The wrPPh5 is attacked, **4.rPPh5-h4??** (because of bQh8); thus mate, because wrPPh5 incl. wK)
- 61) 1.Qb8-f4!! Kf7-f8 2.Kh7-g6 Kf8*g8=rS!** (black royal knight, i.e. bS incl. bK properties) **3.Kg6*f5=rPP!** (white royal Protean pawn, i.e. wP incl. wK-properties, moves like a bP) **3. - rSg8-e7#** (zugzwang, only possible move, since 3. - rSg8-h6?? (because of wQf4) and f6 is blocked. The wrPPf5 is attacked, **4.rPPf5-f4??** (because of wQf4); thus mate, since wrPPf5 incl. wK)
- 62) 1.Kh7-h8! Kf7-g6 2.Qb8-f4! Kg6-h5 3.Kh8*g7=rPP!** (white royal Protean pawn, i.e. wP incl. wK properties, moves like a bP) **3. - Kh5-g6#** (zugzwang, only possible move. The wrPPg7 is attacked, **4.rPPg7-g6??** (because of bKg6); thus mate, since wrPPg7 incl. wK)
- 63) 1.Qf1-a1! g7-g5+ 2.Kh4*g5=rPP!** (white royal Protean pawn, i.e. wP incl. wK properties, moves like a bP) **2. - Kf7-g8 3.Qa1-g7+ Kg8*g7=rQ#** (only possible move. The wrPPg5 is attacked, **4.rPPg5-g4??** (because of bQh7 & bPf5); thus mate, since wrPPg5 incl. wK)
- 64) 1.Kh4-g5! Kf7*g8=rS!** (black royal knight, i.e. bS incl. bK properties) **2.Kg5*f5=rPP!** (white royal Protean pawn, i.e. wP incl. wK properties, moves like a bP) **2. - g7-g5! 3.Qc3-h8+ rSg8-e7#** (only possible move, since wQh8 covers the squares f6 & h6, **board control by white**. The wrPPf5 is attacked, **4.rPPf5-f4??** (because of bPg5); thus mate, since wrPPf5 incl. wK)