

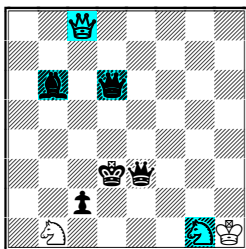
# FAIRINGS...

C.J.Feather 10 Tinwell Road STAMFORD PE9 2QQ England [cfeather@ukonline.co.uk]

## N° 7: April 2010

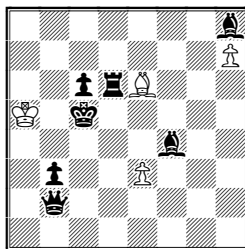
Welcome to our new visitor Geoff Foster (12). **Helpself#:** White plays first and Black helps until forced to mate on his last move. For everything else see the Definitions file sent last time. Apart from light relief in 3 and 9 it is all PWC in this issue; my own favourite (among 1-11) is 10. Best wishes to all!

1.



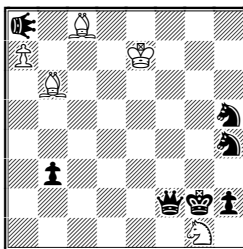
h#2 2 solutions PWC  
chameleons c8,g1,d6,b6

2.



h#2 4 solutions  
PWC

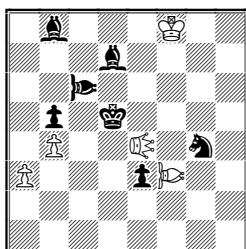
3.



h#2 2 sols Double  
Grasshopper ♟

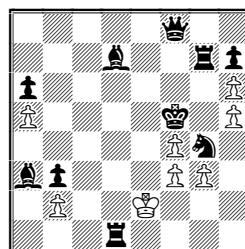
**1** 1.cBd4R cQc4S 2.cRxc4Q[cSd4] cSxc2B[Pd4]# & 1.cQd4s cSe2B 2.cSxe2B[cBd4] cBxe3R[Qd4]# The use of the chameleons enables intensive play on d4. **2** 1.Bd4 h8=R 2.Bd4xh8[Rd4] Rc4#, 1.Be5 h8=B 2.Be5xh8[Be5] Bxd6[Re5]#, 1.Bf6 h8=S 2.Bf6xh8 [Sf6] Se4# & 1.Bg7 h8=Q 2.Bg7xh8[Qg7] Qa7# The BB makes 4 different switchbacks. **3** 1.DGf1 a8=DG 2.Qg3 Bb7# & 1.Db8 axb8=DG 2.Kg3 Bc7# These chameleon echoes use the promoted DGs to prevent interference on the mating line.

4.



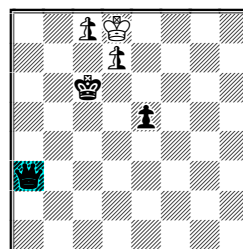
h#2 PWC b) + ♖ g2  
Siren ♁ Nereid ♞

5.



h#2 3 solutions  
PWC

6.

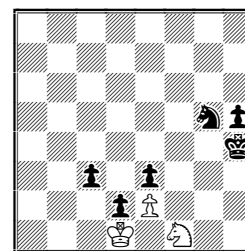


h#3 chameleon-♔ a3  
b) a3=>cham.-♞ PWC

**4** a) 1.Kc4 Slid3 2.NDxf3-g2[NDc6] NDxb5-a4[Pc6]# b) 1.Kxe4[Slid5] SlA2+ (Slid2?) 2.Kxf3[NDe4] Slxg2-h2[Pa2]# An unorthodox interpretation of the "action behind the BK" idea which used to be seen in some of my orthodox h#s. **5** 1.Be8 bxa3[Bb2]

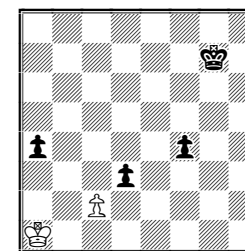
(Kxd1[Re2]? hxg7[Rh6]?) 2.Bxh5[Pe8=Q] Qe6# 1.Qd8 Kxd1 [Re2] (hxg7[Rh6]? bxa3[Bb2]?) 2.Qxa5[Pd8=Q] Qf6# 1.Qb8 hxg7[Rh6] (bxa3[Bb2]? Kxd1[Re2]?) 2.Qxf4[Pb8=Q] Qe5# Triple-avoidance tempo moves at W1. All the B1 moves could be by the BQ (with -Bd7 +BSh3 +BPd5 +BPe6 & WQ>c8) – not worth 2 extra units!  
**6** a) 1.cQe7S nPxc8=ncB[nPd7] 2.Kd6 nPxc8=ncB[ncBd7] 3.ncBb5R ncBe6R# b) 1.cSb5B Ke7 2.Kc7 nPxc8=nB[nPd7] 3.nBxd7[nPc8=ncB] ncBb7R# Differentiated nB/ncB promotions and different ways to produce a ncB on c8. Blocks at B1.

7.



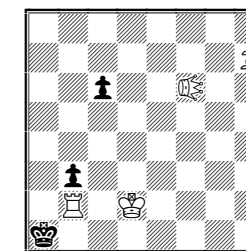
h#3½ b) ♞g5>g4 PWC

8.



h#5 2 solutions PWC

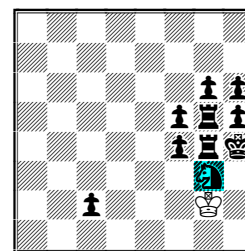
9.



ser-h#8\* Double G ♖

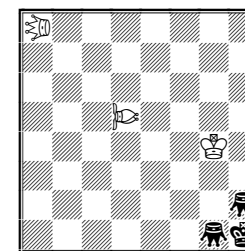
**7** a) 1...Sxd2[Pf1=S] 2.Sh2 Sf1 3.Sg4 Sxe3[Pf1=B] 4.Bh3 Sf5# b) 1...Sxe3[Pf1=B] 2.Bg2 Sf1 3.Bh3 Sxd2[Pf1=S] 4.Sg3 Sf3# **8** 1.a3 c3 2.a2 Kxa2[Pa1=B] 3.Kh6 Kxa1 [Ba2] 4.Bg8 c4 5.Bxc4[Pg8=Q] Qg6# & 1.Kh7 cxd3[Pc2] 2.c1=B d4 3.Ba3 d5 4.Bf8 d6 5.Bxd6[Pf8=Q] Qg7# Echo. **9** 1...nPh8=nDG# 1.nPh5 2.nPh1=nDG 6.nDGd5 7.nDGd3 8.nDGc3 nDG5# Essentially the same mate, but by different DGs.

10.



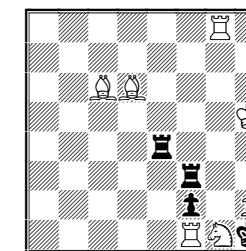
ser-h#8 2 sols PWC  
neutral chameleon-♞g3

11.



ser-h#14\* PWC G ♞  
Nereid ♞ Contra-G ♞

12. Geoff Foster



helpself#2 2 solutions  
PWC

**10** 1.c1=cR 2.cRc3Q 3.cQxg3S[ncSc3] 4.ncSb1B 5.ncBe4R 6.fxe4[ncRf5] 7.gxf5 [ncRg6] 8.Rxg6 [ncRg5] ncRxh5Q[Pg5]#; 1.c1=cQ 2.cQf1S 3.cSxg3B[ncSf1] 4.ncS-e3B 5.fxe3[ncBf4] 6.Rxf4 [ncBg4] 7.hxg4[ncBh5] 8.Kxh5[ncBh4] ncBxg5R[Rh4]#  
**11** 1...NDb7# 1.Gg5 2.Kf2 4.Ge2 5.Ke3 6.Ge4 9.Kxd5[NDe5] 10.Kc4 11.Gb4 13.Ka5 14.Gb5 NDa7# **12** 1.h4 Rh3 2.Sxh3[Rg1] Rxh4[Pe4]# & 1.h3 Re2 2.Sxe2 [Rg1] Rxh3 [Pf3]# A fine interchange of BR functions in perfect construction. Thank you!