

Back-Home Thematic Tournament

The 5th ChessProblems.ca Thematic Tournament requires original chess compositions employing the *Back-Home* fairy condition, recently invented by Nicolas Dupont. Entries should be submitted to the tourney director, Nicolas Dupont, via email at tt5@chessproblems.ca. The closing date is December 31st, 2013. The tournament sections and judges are as follows:

Section 1: Help and Help-Self

Any type of help and help-self stipulations. Fairy units are allowed, but no additional fairy conditions.
Judges: Vlaicu Crişan and Eric Huber (Romania).

Section 2: Series-Movers

Any type of series and parry-series stipulations. Additional fairy conditions are allowed, but no fairy units.
Judge: Paul Răican (Romania).

Section 3: Proof Games

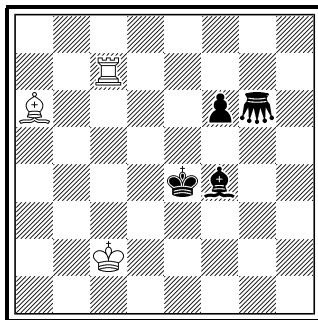
No fairy units or additional conditions are allowed.
Judge: Michel Caillaud (France).

Back-Home definition: If a piece can legally move to the square it occupied in the diagram position, it must move to this back-home square. Back-home moves are prevalent to the virtual capture of the opponent King by any piece, i.e. checks are fairy. If more back-home moves are possible, the side-on-move chooses which move to play. The back-home square of a Pawn which is promoted during the solution is the initial diagram square of this Pawn.

Back-Home compositions can be verified with WinChloe version 3.24 (the French name of the condition is “Retour”) and we hope that Popeye support will be added soon. Entries in Section 1 and 2 must be C+. Each submitted proof game must be at least back-home legal; to ensure this, please scan your intended solution using the WinChloe’s command “Mode Rédaction”. Thematic examples:

BH1

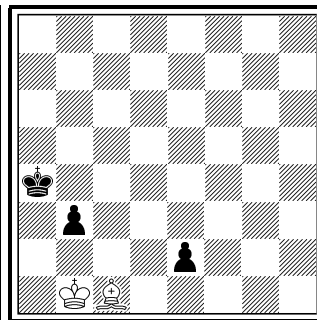
Nicolas Dupont
202 *KoBulChess.com*
2013



h#6 C+ (3+4)
Back-Home
♁ = Grasshopper

BH2

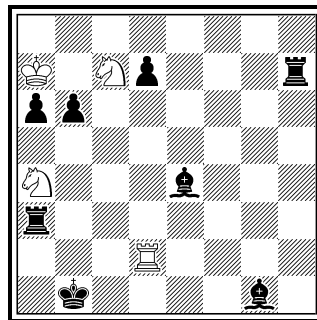
Nicolas Dupont
France-Échecs 2013



hs#3.5 C+ (2+3)
Back-Home

BH3

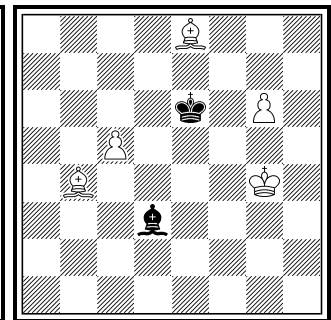
Christian Poisson
France-Échecs 2013



ser-#9 C+ (4+8)
Back-Home

BH4

Nicolas Dupont
T142 ChessProblems.ca
2013



ser-=8 C+ (5+2)
Back-Home, Madrasi

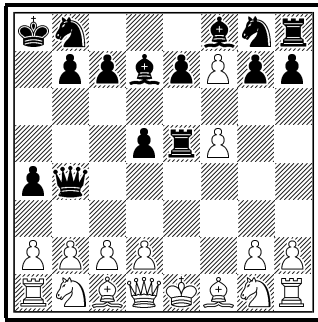
BH5

Nicolas Dupont

J.-M. Trillon MT

2012

1st HM



PG 13.5 C+ (16+15)

Back-Home

Solutions:

BH1: 1. ♖d3 ♘c4 2. ♜b5 ♘b3 3. ♜b2 ♖h7 4. ♜g7 ♖h3 5. ♜e5 ♖d3 6. ♗f5 ♘d5#

BH2: 1. ♗e1=♘ 2. ♘a3 ♗b2 3. ♖c2 ♗b1=♚ 3. ♘c1 ♚b3#

BH3: 1. ♘×b6 2. ♘×a6 3. ♖×d7 4. ♖c7 5. ♖b8 6. ♘a4 7. ♘b4 8. ♖f7 9. ♖f1#

BH4: 1. ♗g7 2. ♘g6 3. ♗g8=♖ 4. ♖f8 5. ♖f5 6. ♘e8 7. ♘b5 8. ♗c6=

BH5: 1. ♗e4 ♗a5 2. ♗e5 ♗a4 3. ♗e6 ♖a5 4. ♘a6 ♖e5+ 5. ♘e2 ♗d5 6. 0-0 ♚d6 7. ♗e×f7+ ♗d7 8. ♗f4 ♚b4 9. ♗f5 ♗c6 10. ♖f2 ♗b6 11. ♖h1 ♗a7 12. ♘g1 ♗a8 13. ♘f1 ♘d7 14. ♖e1 (C+ using a non-official solving program)

Cornel Pacurar, Toronto, June 30th, 2013

Chess Problems.ca TT5

• <http://TT5.ChessProblems.ca>