

# 56<sup>th</sup> WORLD CONGRESS OF CHESS COMPOSITION

## Batumi, Georgia September 21-28, 2013

### 11<sup>th</sup> Romanian Tzuica Tourney

Judges: Vlaicu Crişan & Eric Huber (Romania)

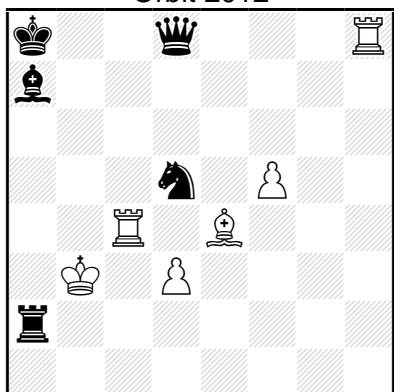
**Theme:** Help-selfmates (**hs#n**) or help-selfstalemates (**hs=n**) with **at least two switchbacks in each phase and at least two phases.**

**Definitions:**

1. In a **help-selfmate** problem in 'n' moves (denoted **hs#n**), White starts and Black collaborates with White in order to reach a position of **s#1** (selfmate in one move) at move 'n' (the last move).
2. **Switchback:** A piece returns to a previously occupied square after it occupied only one other square.

#### Example 1 for Orthodox section

Geoffrey FOSTER  
after Pyotr ZABIROKHIN  
Orbit 2012



hs#3 ( 6 + 5 ) C+  
b) wKb3 ↔ wRc4

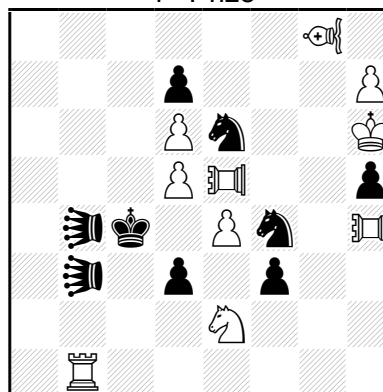
- A) 1.Rc6 Sb6 2.Kb4 Qb8 3.**Rc4** + **Sd5**#  
B) 1.Rb7 Sc7 2.Kc3 Qc8 3.**Rb3** + **Sd5**#

Thematic pieces:

wRc4 / bSd5 in twin A;  
wRb3 / bSd5 in twin B.

#### Example 2 for Fairy Section

Mario PARRINELLO  
Uralsky Problemist 2007  
1<sup>st</sup> Prize



hs#3.5 ( 10 + 9 ) C+  
b) bPd3→c5

♙=Vao ; ♘=Lion ; ♖=Pao

- A) 1...Llxd5 2.VAxd5 Sc5 3.**VAg8** Llxd6 4.PAd5+ **Sce6**#  
B) 1...Llxe4 2.PAxe4 Sd3 3.**PAh4** LLe3 4.PAee4+ **Sdf4**#

Thematic pieces:

wVAg8 / bSe6 in twin A;  
wPAh4 / bSf4 in twin B.

**Prizes** in bottles of Tzuica (The tourney is open worldwide, however the prizes for congress participants only).

Entries to Eric Huber by e-mail at [hubereric@yahoo.fr](mailto:hubereric@yahoo.fr) until September 22<sup>nd</sup>, or during Congress to the Romanian delegate Dinu-loan Nicula until Wednesday, September 25<sup>th</sup>, 9 p.m.