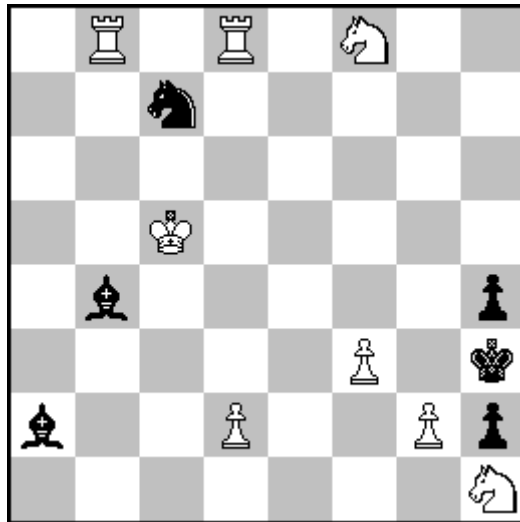


Klaus Wenda & Günther Weeth+
Die Schwalbe 287/2017, no.17220



-8 & r#1 Proca AntiCirce

8+6

1.Sh7-f8! Bc3-b4+ [Ba5-b4+?] 2.Pf5:Pg6ep(Pg2) Pg7-g5 3.Kd4-c5 Bb4-c3+ 4.Kc5-d4 Bc3-b4+ 5.Kd4-c5 Bb4-c3+ 6.Kc5-d4 Ba5-b4+ [forced to avoid the 3rd repetition of an identical position] 7.Kc4-c5 Bb1-a2+ 8.Pc5:Pd6ep(Pd2) & fw: 1.Rb3 Sb5#

Thematical tries:

1.Sg6-f8? Bc3-b4+ 2.Pf5:Pg6ep(Pg2) = illegal!

1.Sd7-f8? Bc3-b4+...8.Pc5:Pd6ep(Pd2) = illegal

1.Se6-f8? Bc3-b4+...& fw. 1.Rb3 Sb5+ 2.Sc7!

1.Pf7-f8=S? Bc3-b4+ 2.Pf5:Pg6ep(Pg2) Pg7-g5 & 1.Se8 Pf7:e8=Q(Qd1)#! FD

This forward defense is valid as the line f1-h3 was opened in W2 (in preparation of the draw pendulum).

The forward stipulation reflexmate allowing effectful and surprising black defenses is not very often seen in defensive retractors