

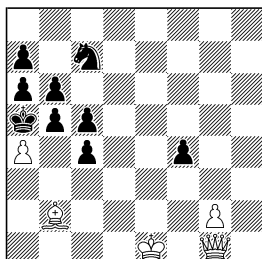
Five problems, one idea

„What the hell all the black pawns are doing“? is a question that may pop up into your mind. And in Nr.1 you may try to push the wQ around, don't do that too much, she hates it. Look at the title, if you had solved one problem, you probably have no difficulties to solve the others.

Have fun!

Best Andreas

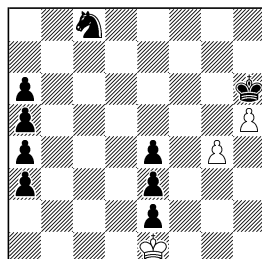
1 Andreas Thoma *Urdruck*



-3/#1 (5+9)

Proca Retraktor
Anticirce Cheylan

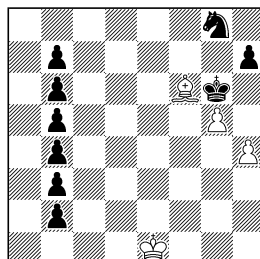
2 Andreas Thoma *Urdruck*



-3/#1 (3+9)

Proca Retraktor
Anticirce Cheylan

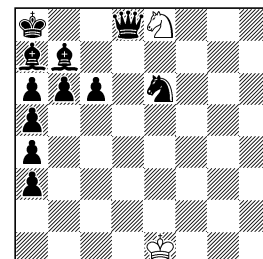
3 Andreas Thoma *Urdruck*



-2/#1 (4+9)

Proca Retraktor
Anticirce Cheylan

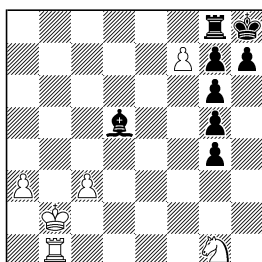
4 Andreas Thoma *Urdruck*



-2#1 (2+11)

Proca Retraktor
Anticirce Cheylan

5 Andreas Thoma *Urdruck*



-2/#1 (6+8)

Proca Retraktor
Anticirce Cheylan

1) Andreas Thoma :

1.h5:g6ep→g2 Bg7-g5 2.Kd7:Lc8→e1 Lb7-c8 3.La3-b2 & vor: 1.La3-b4#

2) Andreas Thoma :

1.Ke1:Bd2→e1 Bd3-d2 2.Kg8:Th8→e1 Th7-h8 3.Kf8-g8 & vor: 1.Bg4-g5#

3) Andreas Thoma :

1.Ke7:Bf7→e1 Sh6-g8 2.Bg4-g5 & vor: 1.Bh4-h5#

4) Andreas Thoma :

1.Kd7:Be7→e1 Db8-d8 2.Kd8-d7 & vor: 1.Se8-c7#)

5) Andreas Thoma :

1.Se4×Bg3→g1 ~ (but not h2×g2 or g3×h2!) 2.Th1-b1 & vor: 1.Th1×Bh7→h1#

Theme

Taking a black pawn, a black piece on its repulsfield is not possible to take a white piece. (Count the black captures!) The theme is shown for a black bishop, rook, knight, queen and pawn.